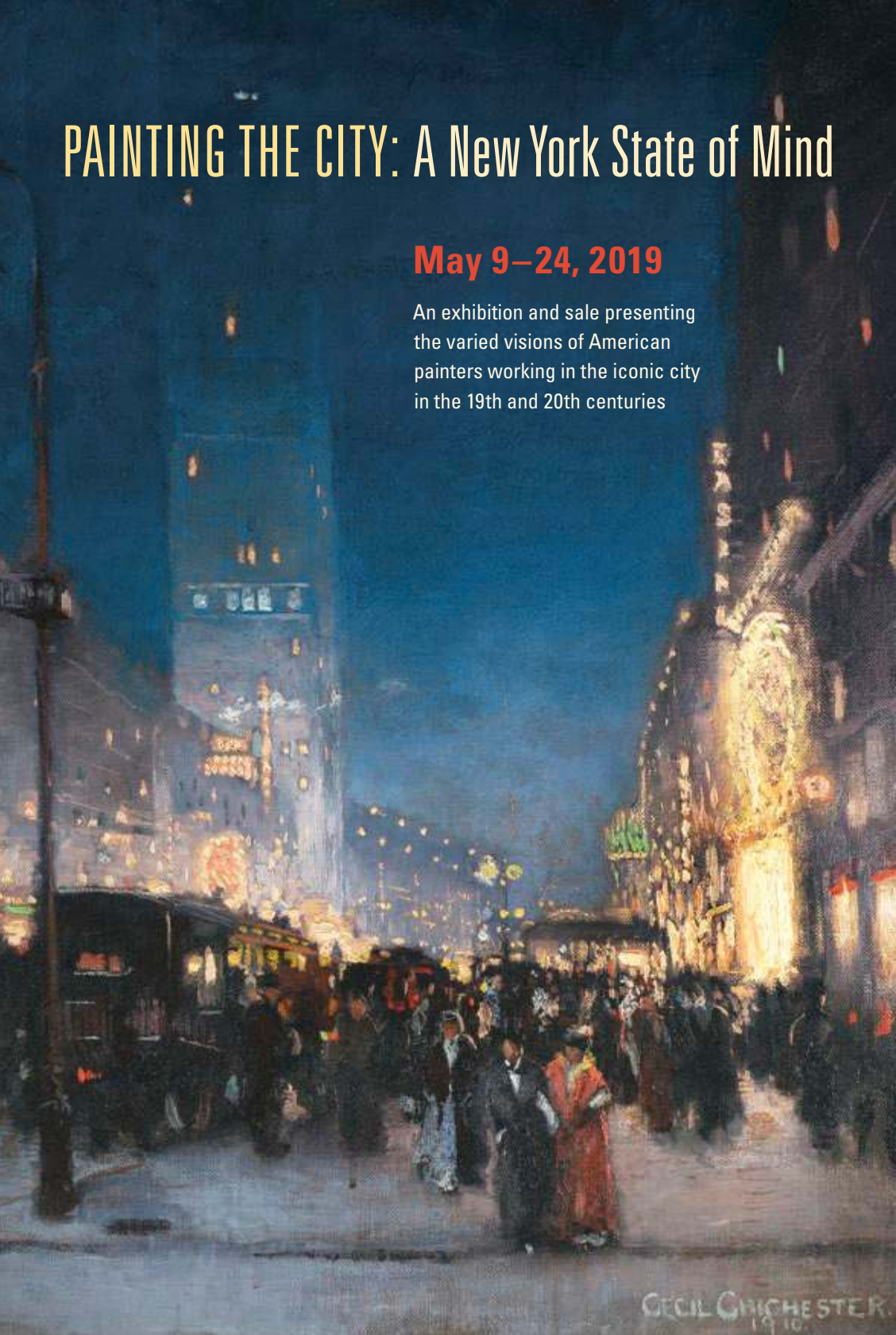


# PAINTING THE CITY: A New York State of Mind

**May 9–24, 2019**

An exhibition and sale presenting the varied visions of American painters working in the iconic city in the 19th and 20th centuries



CECIL CHESTER.  
1910.

QUESTROYAL FINE ART, LLC

Louis M. Salerno, *Owner*  
Brent L. Salerno, *Co-Owner*  
Chloe Heins, *Director*  
Nina Sangimino, *Assistant Director*  
Ally Chapel, *Senior Administrator*  
Megan Gatton, *Gallery Coordinator*  
Pavla Berghen-Wolf, *Research Associate*  
Jacob Rubin, *Art Handler*  
Rita J. Walker, *Controller*

(212) 744-3586  
gallery@questroyalfineart.com  
www.questroyalfineart.com

MAY 2019

COVER

**Cecil Chichester** (1891–1963)  
*The Casino Theater from Broadway  
and West 38th Street*, 1910, detail  
Oil on canvas  
30 x 24<sup>1</sup>/<sub>8</sub> inches  
Signed and dated lower right:  
CECIL CHICHESTER. / 1910.

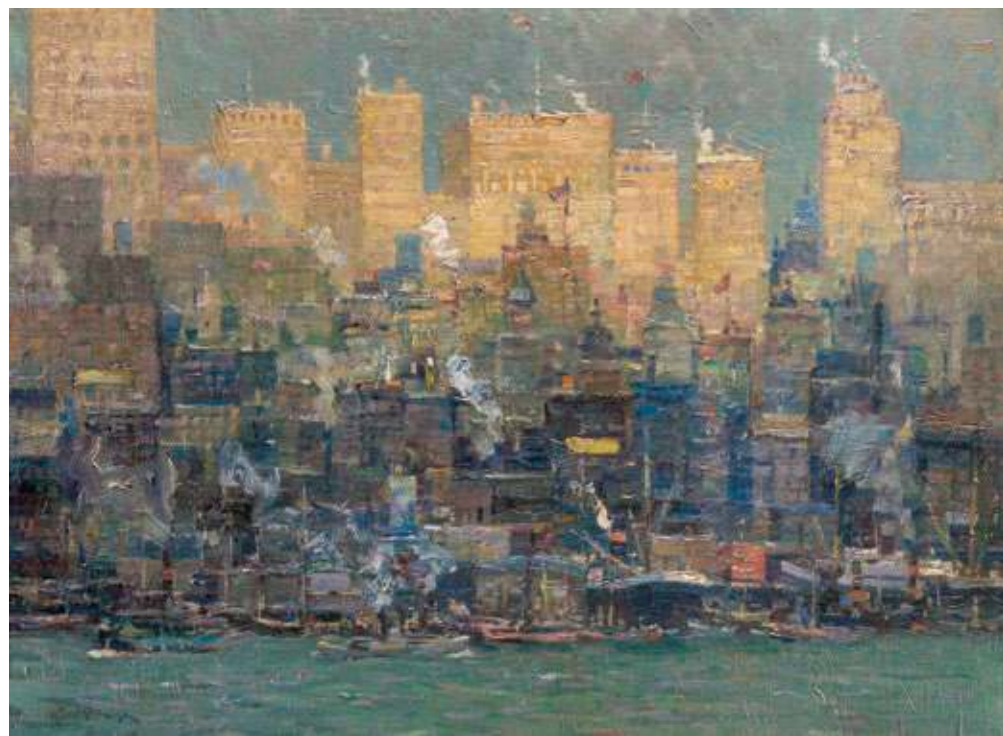
May 9–24, 2019

## PAINTING THE CITY: A New York State of Mind

The city of the world rests on more than 300 square miles of rock and is flanked by two rivers and the Atlantic Ocean. With an influence that spans the earth and an appeal that inspires people of every age and gender, paintings of this great city are among the most coveted of any subject matter in American art.

In this exhibition and sale, we present paintings of the city in varying seasons and times, in an array of light and life, in frenzy and in solitude, any one of which may compel you to forever remain in a “New York state of mind.”

LOUIS M. SALERNO, *Owner*



LEFT

**Kurt Albrecht** (1884–1964)  
*New York from the East River*  
Oil on canvas  
24<sup>1</sup>/<sub>8</sub> x 33 inches  
Signed lower left: Kurt Albrecht

TOP

**John Marin** (1870–1953)  
*New York Series: From Weehawken  
Heights*, 1950  
Oil on canvas  
22<sup>1</sup>/<sub>16</sub> x 28<sup>1</sup>/<sub>8</sub> inches  
Signed and dated lower right: Marin 50;  
on verso: 28 x 22 / WEEHAWKEN

BOTTOM

**Max Kuehne** (1880–1968)  
*Across the Hudson*  
Oil on canvas laid down on board  
24 x 30 inches  
Signed lower left: Kuehne;  
on verso: Across the Hudson / Max Kuehne



**Colin Campbell Cooper** (1856–1937)  
*New York Street Scene*  
*(Looking Up Broadway)*  
Oil on canvas  
18<sup>1</sup>/<sub>16</sub> x 14<sup>1</sup>/<sub>8</sub> inches  
Signed lower right: *Colin Campbell Cooper*



**Paul Cornoyer** (1864–1923)  
*New York City View in Winter*  
Oil on canvas  
24<sup>1</sup>/<sub>4</sub> x 18<sup>1</sup>/<sub>4</sub> inches  
Signed lower left: *PAUL CORNOYER*



**Ernest Fiene** (1894–1965)  
*New York City Scene*  
Oil on canvas laid down on board  
24<sup>5</sup>/<sub>8</sub> x 18<sup>3</sup>/<sub>8</sub> inches  
Signed lower right: *E. Fiene.*



**Everett Shinn** (1876–1953)  
*The Arch, Washington Square, 1929*  
Watercolor, gouache, and pencil on board  
12<sup>1</sup>/<sub>4</sub> x 18<sup>1</sup>/<sub>8</sub> inches  
Signed and dated lower left: *EVERETT SHINN / 1929*



**Paul Cornoyer** (1864–1923)  
*Madison Square Park*  
Oil on canvas  
12<sup>1</sup>/<sub>8</sub> x 16<sup>1</sup>/<sub>16</sub> inches  
Signed lower left: PAUL CORNOYER



**Paul Cornoyer** (1864–1923)  
*Rainy Day, Madison Square*  
Oil on canvas  
22<sup>1</sup>/<sub>8</sub> x 27<sup>1</sup>/<sub>8</sub> inches  
Signed lower left: PAUL CORNOYER



**William Jean Beasley** (1874–1937)  
*72<sup>nd</sup> Street and Broadway*  
Oil on panel  
12 x 16 inches  
Signed lower left: William Jean Beasley



**Bela de Tirefort** (1894–1993)  
*Winter in Washington Square Park*  
Oil on canvas  
27<sup>15</sup>/<sub>16</sub> x 20<sup>1</sup>/<sub>16</sub> inches  
Signed lower right: deTirefort.



**Kate Holston Carpenter** (1866–1947)  
*Winter, 1902*  
Oil on canvas  
16 x 24 inches  
Signed and dated lower left:  
*Kate H. Carpenter. / 1902*

**Guy C. Wiggins** (1883–1962)  
*The Circle, New York City*  
Oil on board  
7<sup>5</sup>/<sub>8</sub> x 10 inches  
Signed lower left: *Guy Wiggins*;  
on verso: "*The Circle*" / *New York City*.



**Hayley Lever** (1876–1958)  
*66th Street, Looking West, New York, 1935*  
Oil on board  
8<sup>7</sup>/<sub>8</sub> x 11<sup>7</sup>/<sub>8</sub> inches  
Signed and dated lower left: *Hayley Lever 35*;  
on verso label: *66th St Looking West. / Park Ave  
Corner Hayley Lever. / New York 1935*

**Leon Dolice** (1892–1960)  
*Central Park, New York, detail*  
Pastel on board  
21<sup>5</sup>/<sub>8</sub> x 17<sup>5</sup>/<sub>8</sub> inches (sight size)  
Inscribed lower left of center: *Central Park N.Y.*;  
signed lower right: *Leon Dolice.*



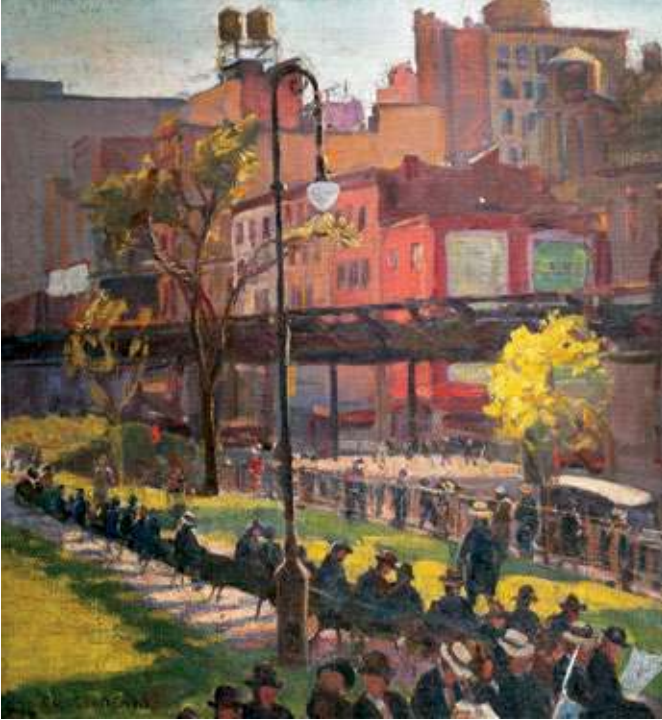


**Leon Dolice** (1892–1960)  
*New York Nocturne*  
Oil on canvas  
20<sup>1</sup>/<sub>8</sub> x 25<sup>1</sup>/<sub>16</sub> inches  
Signed lower right: *DOLICE*



**Childe Hassam** (1859–1935)  
*Castle Garden, 1894*  
Oil on canvas  
12<sup>1</sup>/<sub>4</sub> x 20<sup>3</sup>/<sub>8</sub> inches  
Signed and dated lower left: *Childe Hassam 1894.*

**Guy C. Wiggins** (1883–1962)  
*At the Library, New York, detail*  
Oil on canvas  
30 x 25<sup>1</sup>/<sub>4</sub> inches  
Signed and inscribed lower right: *Guy Wiggins NA*;  
on verso: *At the Library / New York / Guy Wiggins NA.*



**Robert O. Chadeayne**  
(1897–1981)

*9th Avenue El Line*

Oil on canvas

30 x 28 inches

Signed lower left:  
RO. CHADEAYNE



**Reginald Marsh**  
(1898–1954)

*Burlesque Queen*

Oil on masonite

16<sup>1</sup>/<sub>16</sub> x 20 inches

Signed lower right:  
MARSH

## QUESTROYAL FINE ART, LLC

Important American Paintings

903 Park Avenue (at 79th Street), Third Floor, New York, NY 10075 T:(212) 744-3586 F:(212) 585-3828

HOURS: Monday–Friday 10–6, Saturday 10–5 and by appointment

EMAIL: [galler@questroyalfineart.com](mailto:galler@questroyalfineart.com) [www.questroyalfineart.com](http://www.questroyalfineart.com)