

An impressionistic painting of a snowy street scene. In the foreground, a figure in a green coat is walking. To the left, a red building with a white door is visible. In the background, other figures are walking on the snow-covered path. The painting uses thick, visible brushstrokes and a warm color palette of reds, oranges, and yellows, contrasting with the cool blues and whites of the snow.

# THE GIFT OF A LIFETIME

Selections Under \$50,000



# THE GIFT OF A LIFETIME

## Selections Under \$50,000

### QUESTROYAL FINE ART, LLC

Louis M. Salerno, *Owner*

Brent L. Salerno, *Co-Owner*

Chloe Heins, *Director*

Kayla Seifert, *Gallery Manager*

Jesse McCloskey, *Art Handler*

Katie Siede, *Research Associate*

Eamonn Smith, *Administrator*

Annie Taylor, *Administrative Assistant*

Rita J. Walker, *Controller*

(212) 744-3586

[galler@questroyalfineart.com](mailto:galler@questroyalfineart.com)

[www.questroyalfineart.com](http://www.questroyalfineart.com)

DECEMBER 2023

Art is the gift of a lifetime.

A gift that provides daily pleasure—without expiration—never to become obsolete—ever present—always a reminder of the giver—a progenitor of memory and sentiment—truly the gift of a lifetime.

*And* there isn't any reason why art can't be a gift to yourself!

To be assured that the recipient will be completely satisfied, ask us about an exchange policy implemented for this gift-giving season. Timely delivery and stunning gift wrapping included.

LOUIS M. SALERNO, *Owner*





**William Trost Richards (1833–1905)**

*Moonlit Seascape*, 1875

Watercolor on paper

7½ x 13⅛ inches (sight size)

Signed and dated lower left of center:

WMT. Richards 1875

**\$27,500**

LEFT:

**William Edward Norton (1843–1916)**

*Marine Scene with Lighthouse*, 1872

Oil on canvas

18⅛ x 30¼ inches

Signed and dated lower right:

WE NORTON. \ 72

**\$24,000**

RIGHT:

**Aaron Harry Gorson (1872–1933)**

*The Break of the Haze*

Oil on canvas laid down on board

16 x 11⅞ inches

Signed lower right: AH Gorson

**\$16,500**







**Henry F. Farny (1847–1916)**

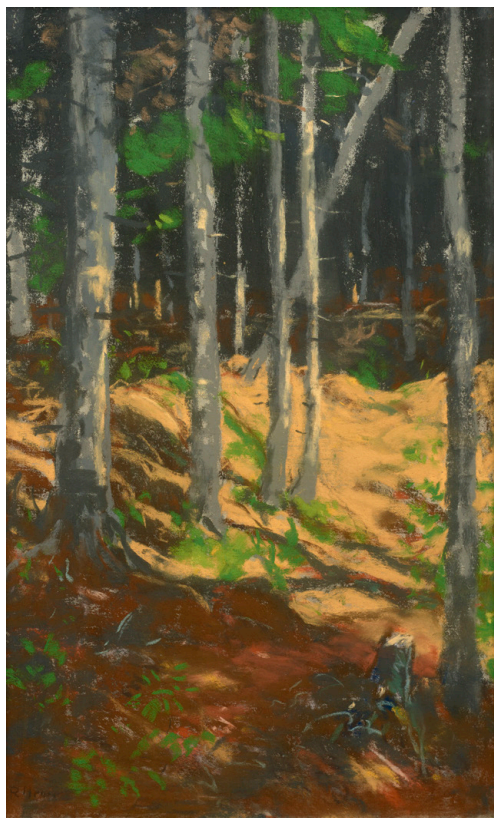
*Deer in the Forest*, 1888

Watercolor and gouache on board

18<sup>5</sup>/<sub>8</sub> x 12<sup>3</sup>/<sub>16</sub> inches

Signed and dated lower right: •FARNY• / 88

**\$42,500**



**Robert Henri (1865–1929)**

*The Woods, Monhegan Island*

Pastel on canvas laid down on board

19<sup>3</sup>/<sub>4</sub> x 12<sup>1</sup>/<sub>2</sub> inches

Signed lower left: *R Henri*; signed lower right:

*R HENRI*; on verso: *Robert Henri /*

*The Woods, Monhigan [sic] Island / 288 / K / 2*

**\$42,000**

**James Renwick Brevoort (1832–1918)**

*Summer Landscape*

Oil on canvas

14 x 24 inches

Signed lower right: *JR Brevoort*

**\$22,500**



**Chauncey Foster Ryder (1868–1949)**

*On the Mountain Side*

Oil on canvas

24<sup>3</sup>/<sub>16</sub> x 20<sup>3</sup>/<sub>16</sub> inches

Signed lower right: *Chauncey F Ryder*

**\$18,500**







**Carl Wuermer** (1900–1983)

*Birches in Winter*

Oil on canvas

25<sup>1</sup>/<sub>8</sub> x 30 inches

Signed lower right: *Carl Wuermer*; on verso: No. 139 /  
*"BIRCHES IN WINTER" / by / CARL WUERMER*

**\$22,500**

**Charles Hoffbauer** (1875–1957)

*The Lagoon, Venice*

Oil on canvas laid down on board

8<sup>5</sup>/<sub>8</sub> x 12<sup>1</sup>/<sub>4</sub> inches (sight size)

**\$21,000**







**Roger Medearis (1920–2001)**

*Missouri Farm*, 1970

Tempera on board

16 x 24 inches

Signed lower left: *MEDEARIS*; on verso: *MISSOURI FARM / 16" x 24" / PAINTED IN EGG TEMPERA / (WITH ACRYLIC POLYMER EMULSION) / PAINTED ON HARDBOARD PANEL WHICH HAS / BEEN COATED WITH ACRYLIC GESSO. / VARNISHED WITH "LIQUITEX SOLUVAR." / 1970 Roger Medearis / MONTEREY PARK, CALIFORNIA*

**\$45,000**

**Frank Myers Boggs (1855–1926)**

*Seine with View of Eiffel Tower (Vue de Paris)*

Oil on canvas

15 x 21<sup>3</sup>/<sub>4</sub> inches

Signed indistinctly lower left under liner

**\$37,500**







**Alec Montroy** (1918-2006)

*Times Square-47th, 1985*

Oil on canvas

30 x 40 inches

On verso: *Times Square-47th St (ca 1920) / AM '85*

**\$27,500**

**Irving Ramsay Wiles** (1861-1948)

*Paddle Wheeler and Schooner on the River, 1916*

Oil on panel

9<sup>3</sup>/<sub>4</sub> x 14 inches

Signed lower right: *Irving R. Wiles*; on verso:

*To Arthur H. Clark Esq. / From Irving R. Wiles April 1920 / New London CONN / Aug - 1916*

**\$35,000**



**Alec Montroy (1918–2006)**

*Statue of Liberty, 1994*

Oil on canvas

36 x 24 inches

Initialed and dated lower left: *A·M 94*

**\$22,500**









**Hayley Lever** (1876–1958)  
*Train Station in Snow*  
Oil on board  
17<sup>7</sup>/<sub>8</sub> x 24<sup>1</sup>/<sub>4</sub> inches  
Signed lower left: *Hayley Lever*  
**\$21,500**

**Ralph Albert Blakelock** (1847–1919)  
*Landscape Silhouette at Twilight*  
Oil on panel  
7<sup>1</sup>/<sub>4</sub> x 10<sup>3</sup>/<sub>4</sub> inches  
Signed illegibly lower right  
**\$48,500**



**James Penney** (1910–1982)  
*Street in Winter*, 1949  
Oil on canvas  
30 x 16<sup>1</sup>/<sub>4</sub> inches  
Signed lower right: *PENNEY*; on stretcher bar:  
*Street in Winter JAMES / PENNEY 1949*  
**\$15,000**





**Eric Sloane** (1905–1985)

*Spring in Cambridge, Vermont*

Oil on board

28 x 33 inches

Signed lower right: *SLOANE*; inscribed lower left:

*SPRING IN / CAMBRIDGE VERMONT*; on verso:

— *ERIC SLOANE / BROOKFIELD / CONN*

**\$29,500**

**Henry Martin Gasser** (1909–1981)

*Sand, Sea, and Rocks*

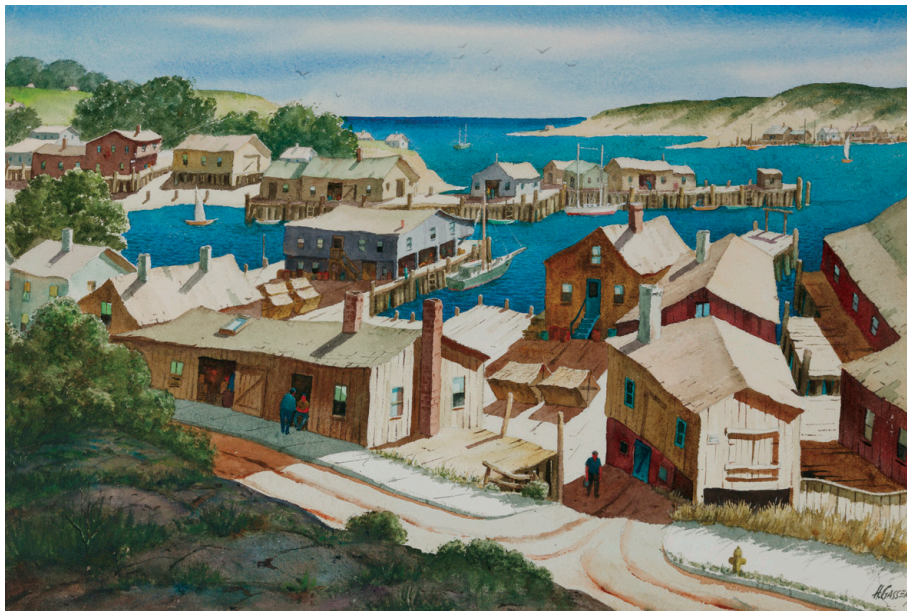
Watercolor and gouache on paper

19<sup>3</sup>/<sub>8</sub> x 26 inches (sight size)

Signed lower left: *H. GASSER*

**\$27,500**





**Henry Martin Gasser (1909–1981)**

*Gloucester Vista*

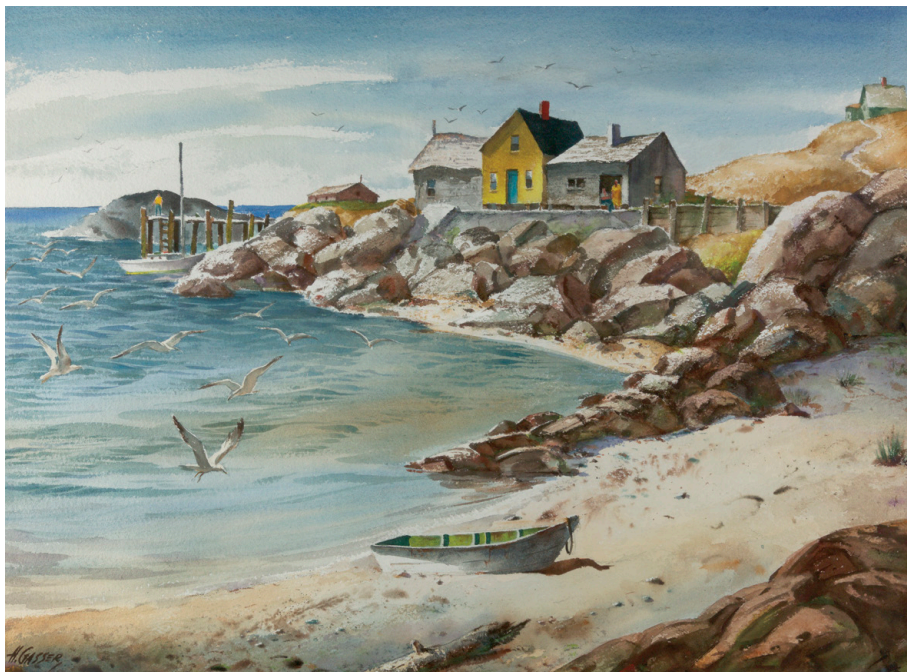
Watercolor and gouache on paper

15<sup>3</sup>/<sub>8</sub> x 22<sup>15</sup>/<sub>16</sub> inches

Signed lower right: *H. GASSER*; on verso:

*"Gloucester Vista" / HENRY GASSER / N.A.*

**\$25,000**







**Ben Bauer** (b.1980)

*Moon Show in Withrow*

Oil on aluminum

24 x 30 inches

Signed lower left: *BEN BAUER*; on verso:

*MOON SHOW IN WITHROW / 24" X 30"*

*OIL ON ALUMINUM / BEN BAUER*

**\$21,500**

**Harry Leith-Ross** (1886-1973)

*Snow on the West Bank*

Oil on board

8 1/4 x 10 1/4 inches

Signed lower right: *Leith-Ross*

**\$17,500**





**Walter Launt Palmer** (1854–1932)  
*Moonrise Over a Snowy Landscape*  
 Watercolor, gouache, and crayon on paper  
 laid down on board  
 19<sup>15</sup>/<sub>16</sub> x 23<sup>7</sup>/<sub>8</sub> inches  
 Signed lower right: –W.L. PALMER–

**\$29,500**







**James Fairman (1826-1904)**

*Presidential Range, New Hampshire, 1870*

Oil on canvas

30 x 46<sup>1</sup>/<sub>8</sub> inches

Initialed and dated lower left: *J.F. 1870*

**\$37,500**

## QUESTROYAL FINE ART, LLC

Important American Paintings

903 Park Avenue (at 79th Street), Third Floor, New York, NY 10075 T:(212) 744-3586 F:(212) 585-3828

HOURS: Monday-Friday 10-6, Saturday 10-5 and by appointment

EMAIL: [gallery@questroyalfineart.com](mailto:gallery@questroyalfineart.com) [www.questroyalfineart.com](http://www.questroyalfineart.com)