



# THE GIFT OF ART



All Under \$25,000

# THE GIFT OF ART

Art is the gift of a lifetime, present at every milestone, the ultimate perpetuator of memory and sentiment. Unlike any other possession, it is beyond the reach of obsolescence.

Art is the perfect gift, but since it is highly personal we want you to feel assured that the recipient will be completely satisfied. Ask us about our exchange policy for any painting offered herein.

Do something really exciting this holiday season. Give a gift that will last forever.

LOUIS M. SALERNO, Owner

All works under \$25,000

## QUESTROYAL FINE ART, LLC

Louis M. Salerno, *Owner*

Brent L. Salerno, *Co-Owner*

Chloe Heins, *Director*

Nina Sangimino, *Assistant Director*

Ally Chapel, *Senior Administrator*

Megan Gatton, *Gallery Coordinator*

Pavla Berghen-Wolf, *Research Associate*

Rita J. Walker, *Controller*

(212) 744-3586

[gallery@questroyalfineart.com](mailto:gallery@questroyalfineart.com)

[www.questroyalfineart.com](http://www.questroyalfineart.com)

DECEMBER 2018



**Eric Sloane** (1905–1985)

*Midwinter*

Oil on board

15<sup>1</sup>/<sub>8</sub> x 28<sup>1</sup>/<sub>4</sub> inches

Signed and inscribed lower left:

*Eric Sloane / NA.; on verso: MIDWINTER*



**Carl Wuermer** (1900–1983)

*Apple Blossoms*

Oil on canvas

25<sup>1</sup>/<sub>4</sub> x 30<sup>1</sup>/<sub>8</sub> inches

Signed lower right: *Carl Wuermer;*

on verso: *No. 158 / "APPLE-BLOSSOMS" / by / CARL WUERMER*



**James Brade Sword** (1839–1915)

*Landscape with English Setters*

Oil on canvas

18<sup>5</sup>/<sub>16</sub> x 30<sup>1</sup>/<sub>4</sub> inches

Signed lower left: *J. B. Sword*



**Albert Fitch Bellows** (1829–1883)

*Landscape with Pond, 1862*

Oil on canvas

13<sup>1</sup>/<sub>8</sub> x 21<sup>3</sup>/<sub>16</sub> inches

Signed and dated lower left:

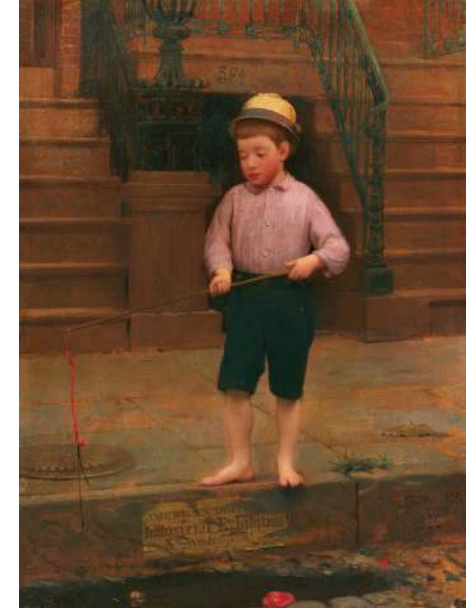
*A. F. Bellows / 1862*



**Alexander Francois Loemans** (d. 1898)  
*The Hunter's Return*  
Oil on board  
12 1/8 x 18 1/4 inches  
Signed lower left: *Loemans*



**Ernest Fiene** (1894–1965)  
*New York City Scene*  
Oil on canvas laid down on board  
24 5/8 x 18 3/8 inches  
Signed lower right: *E. Fiene.*



**Seymour Joseph Guy** (1824–1910)  
*Boy Fishing*, 1871  
Oil on canvas  
11 7/8 x 9 1/16 inches  
Monogrammed, inscribed, and dated lower right:  
*JT Guy N.A. / 1871*

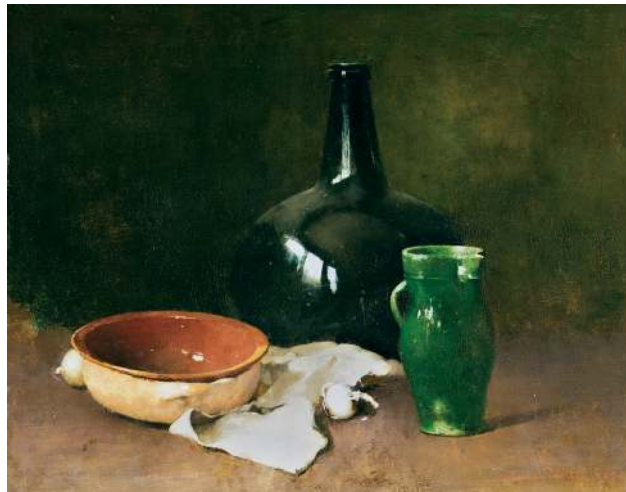


**Hayley Lever** (1876–1958)  
*66th Street, Looking West, New York*, 1935  
Oil on board  
8 7/8 x 11 7/8 inches  
Signed and dated lower left: *Hayley Lever 35*;  
on verso label: *66th St Looking West. / Park  
Ave Corner Hayley Lever. / New York 1935*



**Harry Roseland** (1866–1950)  
*Looking into the Future*, 1899  
Oil on canvas  
18 1/8 x 24 1/8 inches  
Signed and dated upper right: *HARRY ROSELAND. / .99*

**Emil Carlsen** (1853–1932)  
*Still Life with Green Pitcher*, 1905  
Oil on panel  
15 15/16 x 19 15/16 inches  
Signed and dated lower right:  
*Emil. Carlsen 1905.*





**William Trost Richards** (1833–1905)  
*Coastal View with Rocks*  
Oil on board  
5½ x 9¼ inches



**Ralph Albert Blakelock** (1847–1919)  
*Sunset on the Marsh*  
Oil on canvas  
4 x 6⅝ inches  
Signed lower right in arrowhead:  
*R. A. Blakelock*



**Charles Vezin** (1858–1942)  
*Brooklyn Bridge*  
Oil on board  
10<sup>15</sup>/<sub>16</sub> x 15<sup>1</sup>/<sub>16</sub> inches  
Signed lower right: *C. Vezin*

**Charles Hoffbauer** (1875–1957)  
*The Lagoon, Venice*  
Oil on canvas laid down on board  
8<sup>5</sup>/<sub>8</sub> x 12¼ inches (sight size)



**Charles H. Chapin** (1830–1889)  
*Landscape*  
Oil on canvas  
12¼ x 20¼ inches  
Signed lower left: *C. H. Chapin.*



**Paul King** (1867–1947)  
*Isles of Shoals*  
Oil on canvas laid down on board  
11<sup>7</sup>/<sub>8</sub> x 16¼ inches  
Signed lower left: *PAUL KING*





**Reginald Marsh** (1898–1954)  
*Locomotive*, 1929  
Watercolor and pencil on paper  
13<sup>15</sup>/<sub>16</sub> x 20 inches  
Signed and dated lower right:  
*Reginald Marsh 1929*

**Henry Martin Gasser** (1909–1981)  
*The Yellow House*  
Oil on canvas laid down on board  
23<sup>15</sup>/<sub>16</sub> x 30 inches  
Signed lower left: *H. GASSER*,



## QUESTROYAL FINE ART, LLC

Important American Paintings

903 Park Avenue (at 79th Street), Third Floor, New York, NY 10075 T:(212) 744-3586 F:(212) 585-3828

HOURS: Monday–Friday 10–6, Saturday 10–5 and by appointment

EMAIL: [gallery@questroyalfineart.com](mailto:gallery@questroyalfineart.com) [www.questroyalfineart.com](http://www.questroyalfineart.com)