



ART IS LIFE'S MOST ENDURING POSSESSION

16 Selections



QUESTROYAL FINE ART, LLC

Louis M. Salerno, *Owner*
Brent L. Salerno, *Co-Owner*
Chloe Heins, *Director*
Kayla Seifert, *Gallery Manager*
Jesse McCloskey, *Art Handler*
Katie Siede, *Research Associate*
Eamonn Smith, *Administrator*
David Willner, *Administrative Assistant*
Rita J. Walker, *Controller*

(212) 744-3586
galler@questroyalfineart.com
www.questroyalfineart.com

MAY 2023

Mauritz Frederik Hendrik de Haas (1832–1895)
Sunset on the Coast
Oil on canvas
40¹/₈ x 67¹/₈ inches
Signed lower right: *MFH de Haas*
\$225,000

ART IS LIFE'S MOST ENDURING POSSESSION

Empires have fallen, financial institutions have collapsed, world wars have been waged, plagues have come and gone—art survives.

All the great innovations of the past are obsolete—except art.

Chosen wisely, art is an asset with integrity and longevity.

Trust your instincts, strive to acquire what you love.

Art is life's most enduring possession.

LOUIS M. SALERNO, Owner

Raymond Dabb Yelland (1848–1900)
Moonlit Sea
Oil on board
10¹/₄ x 6⁷/₈ inches
Signed lower right: *R.D. Yelland*
\$10,500





George Henry Smillie (1840–1921)

New England Coast Scene

Oil on canvas

20³/₈ x 30³/₈ inches

Signed and inscribed lower left: *Geo. H. Smillie – N.Y.*

\$24,000

Childe Hassam (1859–1935)

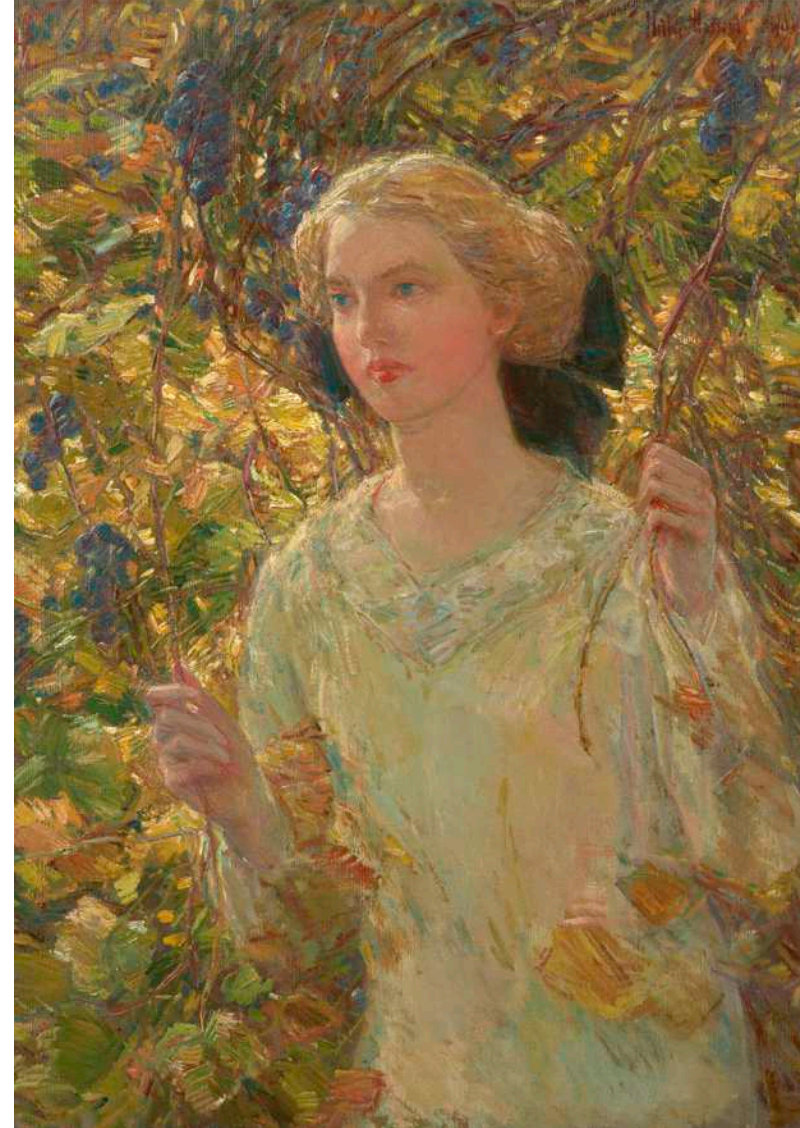
The Grapevine, 1911

Oil on canvas

35¹/₄ x 25³/₈ inches

Signed and dated: *Child Hassam 1911*

\$195,000





Ben Bauer (b. 1980)
Moon Show in Withrow
 Oil on aluminum
 24 x 30 inches
 Signed lower left: *BEN BAUER*;
 on verso: *MOON SHOW IN
 WITHROW / 24" X 30" OIL ON
 ALUMINUM / BEN BAUER*
\$21,500

Daniel Garber (1880–1958)
Elm Bough, 1940
 Oil on canvas
 28 x 30 inches
 Signed lower right: *Daniel Garber*
\$385,000





Eric Sloane (1905–1985)
Cornwall Bridge, Connecticut
 Oil on board
 23⁷/₈ x 48 inches
 Signed lower left of center:
ERIC SLOANE—;
 on verso: *Eric SLOANE /*
CORNWALL BRIDGE / CONN.
\$38,500

Eric Sloane (1905–1985)
Connecticut Village
 Oil on board
 24 x 20⁵/₈ inches
 Signed and inscribed lower left:
Eric SLOANE NA; on verso:
CONNECTICUT VILLAGE
\$24,500





Theodore Robinson (1852–1896)

*Union Square, Winter
(Washington Monument)*

Oil on canvas

18³/₈ x 22³/₈ inches

\$185,000

Edward Moran (1829–1901)

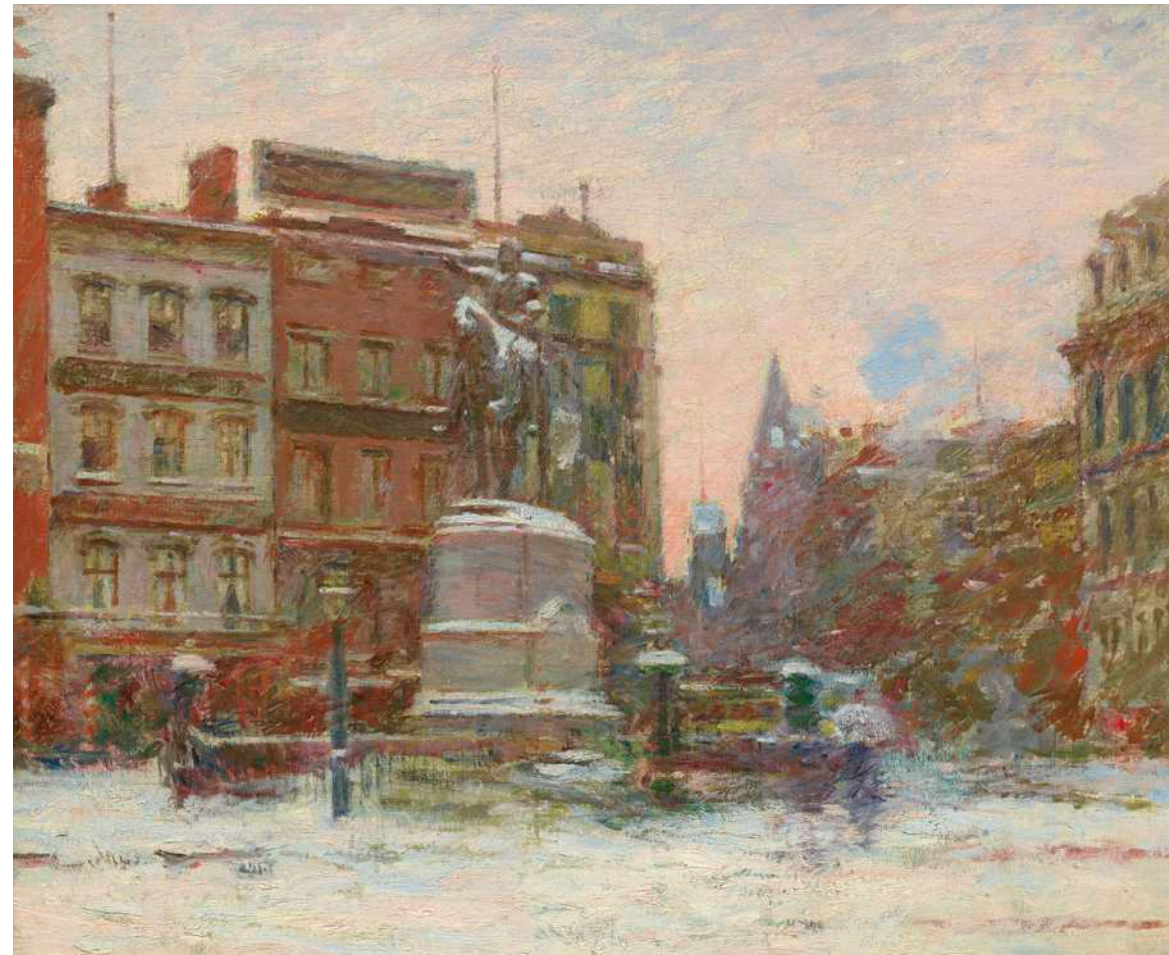
*Squally Weather off North Haven,
Bay of Fundy, 1859*

Oil on canvas

24 x 36 inches

Signed and dated lower left: *E. Moran 1859*;
on verso: *Squally Weather / off North Haven,
Bay of Fundy / E. Moran / 1859*

\$49,500





Paul Cornoyer (1864–1923)
Madison Square Garden at Night, 1912
 Oil on canvas
 22 x 27¹/₄ inches
 Signed and dated lower left: *PAUL CORNOYER / 1912*
\$47,500



Jessie Arms Botke (1883–1971)
Sunflowers
 Watercolor on paper
 21¹/₈ x 19¹/₄ inches (sight size)
 Signed lower right: *JESSIE ARMS BOTKE*
\$19,500



Tom Yost (b. 1957)
Kaaterskill Clove, 2022
 Oil on linen
 20³/₄ x 16⁷/₈ inches
 Signed and dated lower right of center: *Yost '22*
\$12,500



RIGHT:

Ogden Minton Pleissner
(1905–1983)

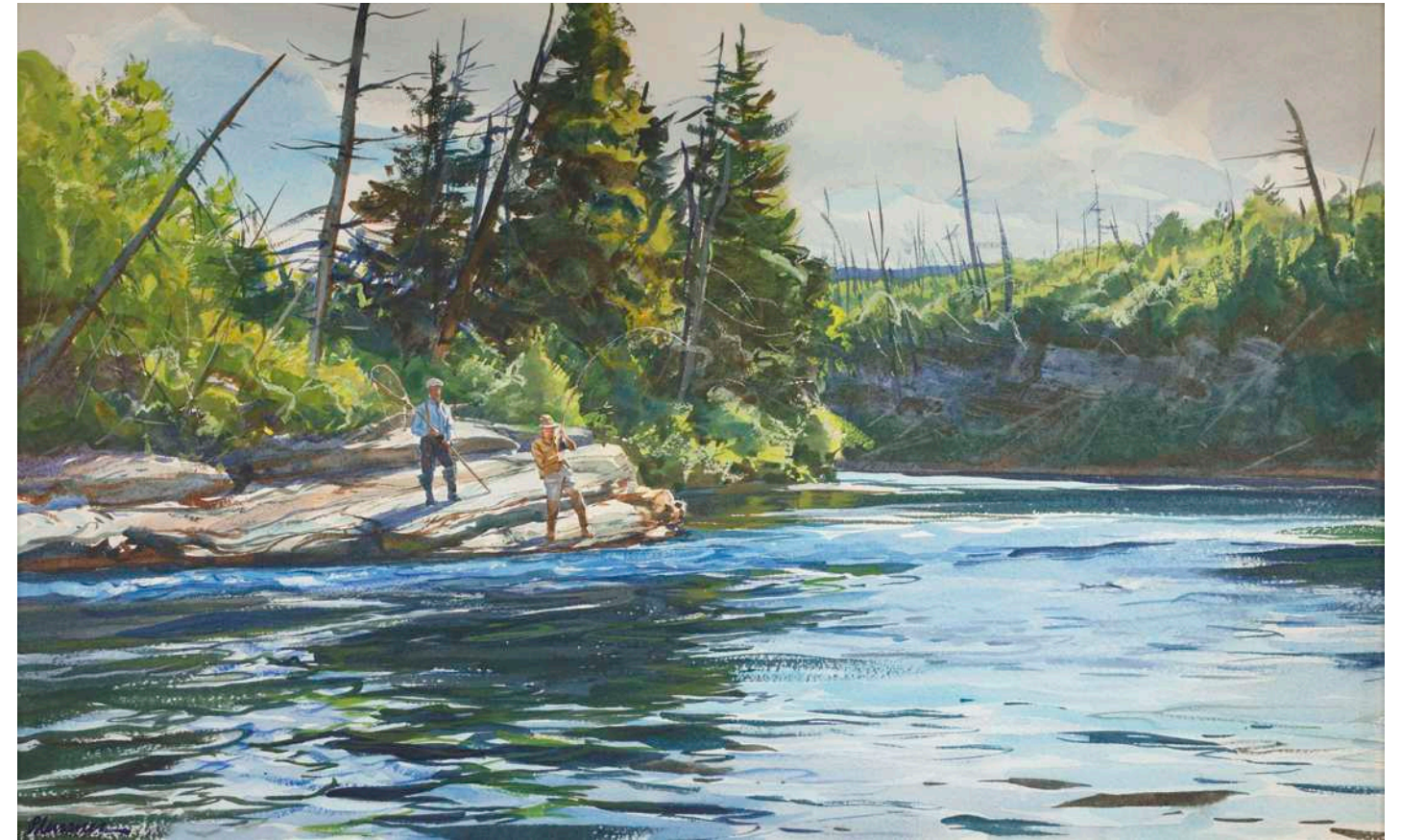
Big Salmon Pool

Watercolor on paper

15⁷/₈ x 25³/₄ inches (sight size)

Signed lower left: *Pleissner*

\$39,000



LEFT:

George William Sotter
(1879–1953)

The Artist's Studio, 1946

Oil on board

22 x 26 inches

Signed and dated lower right:

G.W. Sotter-46

\$195,000



Abraham Jacobi Bogdanove
(1886-1946)

Coastal Scene

Oil on board

8 x 10 inches

Signed lower left: *A.J. Bogdanove*

\$5,000

QUESTROYAL FINE ART, LLC

Important American Paintings

903 Park Avenue (at 79th Street), Third Floor, New York, NY 10075 T: (212) 744-3586 F: (212) 585-3828

HOURS: Monday-Friday 10-6, Saturday 10-5 and by appointment

EMAIL: gallery@questroyalfineart.com www.questroyalfineart.com