

QUESTROYAL FINE ART, LLC



1
Milton Avery (1885–1965)
Sunlit Forest, 1956
Pastel and gouache on paper
23½ x 17¾ inches (sight size)
Signed and dated lower left: *Milton Avery 1956*; on verso: *Sunlit Forest by Milton Avery 24 x 18 1956*



2
Millard Owen Sheets (1907–1989)
The Night Herd
Watercolor, gouache, and pencil on paper
21¾ x 29¼ inches (sight size)
On verso: *"THE NIGHT HERD" / Millard Sheets*

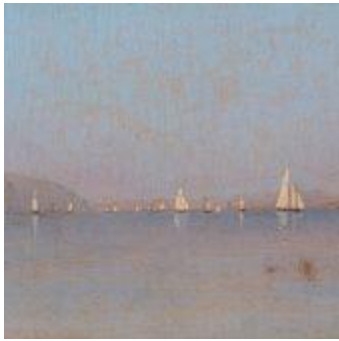


3
Hayley Lever (1876–1958)
Spring In Caldwell, New Jersey, 1928
Oil on canvas
24 1/16 x 30 1/16 inches
Signed and indistinctly dated lower right: *Hayley Lever 19[illegible]*; on stretcher bar: *SPRING IN CALDWELL, N.J. 1928*



4
Charles Burchfield (1893–1967)
(Untitled) The Freight Train
Watercolor and pencil on paper
11⅞ x 18 inches

QUESTROYAL FINE ART, LLC



5
Francis Augustus Silva (1835–1886)
Boating on the Hudson River
Oil on canvas
5 x 10 1/16 inches
Signed lower right: *Silva*



7
Reginald Marsh (1898–1954)
Burlesque Queen
Oil on masonite
16 1/16 x 20 inches
Signed lower right: *MARSH*



6
Adolf Ferdinand Konrad (1915–2003)
Music on Fulton Street, 1954
Oil on canvas
22 x 18 1/4 inches
Signed and dated lower left: *Konrad*
1954



8
Colin Campbell Cooper (1856–1937)
Downtown, New York, 1908
Pastel, gouache, and pencil on paper
laid down on board
29 1/4 x 21 1/4 inches (sight size)
Signed and dated lower right: *Colin*
Campbell Cooper / 1908

QUESTROYAL FINE ART, LLC



9

Henry Martin Gasser (1909–1981)

Blue Harbor

Oil on canvas

24¹/₈ x 29⁷/₈ inches

Signed lower right: *H. GASSER*; on verso: "BLUE HARBOR" / HENRY GASSER / N.A.



11

Emile Albert Gruppe (1896–1978)

The Old Timer

Oil on canvas

36 x 30 1/16 inches

Signed lower right: *Emile A. Gruppe*; on stretcher bar: *The Old Timer*



10

Sanford Robinson Gifford (1823–1880)

View of Constantinople (The Golden Horn)

Oil on canvas

7⁵/₈ x 12⁷/₈ inches

Signed lower right: *SR Gifford*; on verso: *The Golden Horn / by SR Gifford*



12

Martin Lewis (1881–1962)

Snowstorm, Danbury, Connecticut

Watercolor, gouache, and pencil on paper

20⁵/₈ x 17¹/₂ inches

Signed and inscribed lower left: *MARTIN LEWIS / DANBURY CONN*

QUESTROYAL FINE ART, LLC



13
A. Lassell Ripley (1896–1969)
Three Grouse on a Hard Pine
Watercolor and gouache on paper
19 5/16 x 27 15/16 inches
Signed lower right: *A. Lassell Ripley* ©



14
Harry Willson Watrous (1857–1940)
Syro-Roman Glass
Oil on canvas laid down on board
7 7/8 x 9 15/16 inches
Signed lower right: *Watrous*



15
Thomas Moran (1837–1926)
Venice, 1896
Oil on canvas
14 1/16 x 20 1/16 inches
Monogrammed and dated lower right: *TMORAN. 1896.*; on stretcher bar: *Venice, Moran.*



16
Charles H. Chapin (1830–1889)
Autumn Landscape, 1877
Oil on canvas
11 1/2 x 16 7/8 inches
Signed and dated lower right: *C.H. Chapin / 77*

QUESTROYAL FINE ART, LLC



17
Chauncey Foster Ryder (1868–1949)
On the Mountain Side
Oil on canvas
24 3/16 x 20 3/16 inches
Signed lower right: *Chauncey F Ryder*



19
Frank Myers Boggs (1855–1926)
Quai Henri IV à Paris
Oil on canvas
28 15/16 x 36 1/4 inches
Signed and inscribed lower left: *Frank-Boggs Paris*



18
William Glackens (1870–1938)
View into a Garden
Oil on panel
8 7/16 x 10 11/16 inches
On verso: *W. G. / by E. G.*



20
Granville Redmond (1871–1935)
Moonlight on the Marsh
Oil on canvas
12 x 16 inches
Signed lower left: *Granville Redmond*

QUESTROYAL FINE ART, LLC



21

Childe Hassam (1859–1935)

Kitty Walking in the Snow, 1918

Oil on panel

15¾ x 10½ inches

Signed and dated lower left: *Childe*

Hassam 1918.; on verso: *CH / 1918*