

THE CHOSEN

21 selections by
time-honored artists





Robert Henri (1865–1929)

Celestine, 1920

Oil on canvas

32 x 26 inches

Signed lower right: *Robert Henri*; inscribed
on verso: 26 / *L. Robert Henri / Celestine*

\$495,000

THE CHOSEN

QUESTROYAL FINE ART, LLC

Louis M. Salerno, *Owner*

Brent L. Salerno, *Co-Owner*

Jesse McCloskey, *Art Handler*

Xin Lian, *Senior Administrator*

Mackenzie Penea, *Gallery Coordinator*

Erin Chase, *Research Associate*

Emma Capaldi, *Research Associate*

Julia Smart, *Research Associate*

Rita J. Walker, *Controller*

(212) 744-3586

gallery@questroyalfineart.com

www.questroyalfineart.com

MAY 2026

We present twenty-one paintings created in the nineteenth and early twentieth century by artists whose work has retained its place in museums and in the collections of discerning individuals of every succeeding generation.

These paintings transcend the preference of any time or place and resonate in the human experience that is common to all mankind. They have endured the test of time that has vanquished lesser examples. These are works worthy of any collection.

LOUIS M. SALERNO, Owner



Charles Courtney Curran (1861-1942)

Children Fishing

Oil on canvas

18¹/₁₆ x 32¹/₈ inches

Inscribed, signed, and dated lower right: *Copyright [illegible] by / CHAS · C · CURRAN · / 1897*; on stretcher bar: —*Children Fishing*— / —*Charles. C. Curran.*—

\$185,000



Jasper Francis Cropsey (1823–1900)

The Old Home, Warwick, New York

Oil on canvas

59¹/₈ x 47¹/₂ inches (sight size)

Signed and dated lower center: *J.F. Cropsey / 1884*

\$395,000



Jasper Francis Cropsey (1823–1900)

View of Sugar Loaf Mountain, 1895

Oil on canvas

9¹/₈ x 12⁵/₈ inches

Signed lower left: *J.F. Cropsey 1895*

\$47,500

Sanford Robinson Gifford (1823–1880)

In the Wilderness

Oil on canvas

6¹/₈ x 8¹/₂ inches

Signed indistinctly lower left: *SRG*

\$65,000





Everett Shinn (1876–1953)

Lunch Wagon, Madison Square, 1904

Mixed media on paper

8 1/8 x 12 1/2 inches (sight size)

Signed and dated indistinctly lower left: *E. SHINN / 1904*

\$79,500





Reginald Marsh (1898–1954)

Frozen Custard

Tempera on board

28 x 33¹/₈ inches

Signed lower right: *Reginald Marsh 1939*

\$75,000

Everett Shinn (1876–1953)

Millionaire's Row, 1904

Mixed media on paper

8¹/₄ x 13¹/₂ inches (sight size)

Signed and dated lower center: *E Shinn 1904*

\$37,500



Walter Launt Palmer (1854–1932)

Winter Stream

Oil on canvas

20 x 14 inches

Signed and dated lower left: *W. L. Palmer / 1889*

\$60,000

Ralph Albert Blakelock (1847–1919)

The Setting Sun

Oil on canvas

18¹/₈ x 32 inches

Signed indistinctly lower left: *R.A. Blakelock*
(NBI-704-1)

\$95,000





James Hope (1818-1892)

Watkins Glen

Oil on canvas

36¹/₈ x 30¹/₈ inches

Signed and dated lower right: 1887 / J. Hope

\$55,000



Charles Burchfield (1893–1967)

Watertower and Queen Anne's Lace, 1917

Watercolor, gouache, and colored pencil on paper

17⁵/₈ x 21¹/₄ inches

Signed and dated lower left: *Chas Burchfield / 1917*;

on verso: *Aug 1, 1917*

\$95,000

Carl Wuermer (1900–1983)

The Wintry River

Oil on canvas

25 x 30 inches

Signed lower left: *Carl Wuermer*

\$20,000



Paul Cornoyer (1864–1923)

Madison Square Garden at Night, 1912

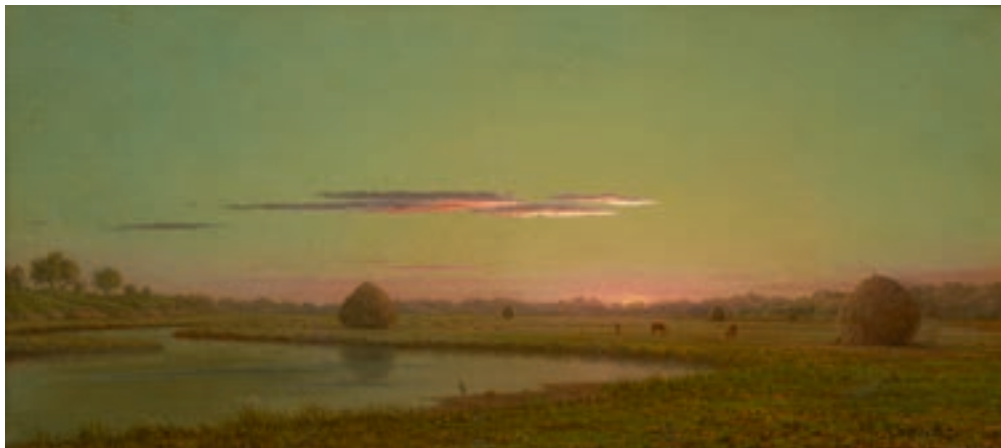
Oil on canvas

22 x 27¹/₄ inches

Signed and dated lower left: *PAUL CORNOYER / 1912*

\$47,500





Martin Johnson Heade (1819–1904)

Marsh Scene at Sunset

Oil on canvas

10¹/₈ x 22¹/₈ inches

Signed lower right: *MJ Heade*

\$275,000



John Williamson (1826–1885)

View of New York Harbor

Oil on canvas

20 x 34 inches

Signed lower right: *J.W. 66*

\$145,000



Mauritz Frederik Hendrik de Haas (1832-1895)

Ships by Moonlight, 1878

Oil on canvas

27¹/₈ x 22¹/₈ inches

Signed lower left: *MFH de Haas*. 78

\$38,500



Marsden Hartley (1877–1943)
Still Life with Peaches and Pears

Oil on canvas

10³/₄ x 18¹/₄ inches

\$110,000



Archibald Carey Smith (1837–1911)

Thimble Islands, Near New Haven

Oil on canvas

11⁵/₈ x 21⁵/₈ inches

Signed lower right: *A Cary Smith*

\$49,000



Eric Sloane (1905–1985)

Cornwall Bridge, Connecticut

Oil on board

32¹/₄ x 26¹/₂ inches

Signed lower right: —Eric / Sloane

\$35,000



Max Kuehne (1880-1968)

Water View of New York, 1911

Oil on canvas

20³/₈ x 23⁷/₈ inches

Signed and dated lower right: *Kuehne / 11*

\$37,500

QUESTROYAL FINE ART, LLC

Important American Paintings

903 Park Avenue (at 79th Street), Third Floor, New York, NY 10075 T:(212) 744-3586 F:(212) 585-3828

HOURS: Monday-Friday 10-6, Saturday 10-5 and by appointment

EMAIL: galler@questroyalfineart.com www.questroyalfineart.com