



**Questroyal Presents:**  
**Distinguished by Merit**

# Questroyal Presents: Distinguished by Merit

## QUESTROYAL FINE ART, LLC

Louis M. Salerno, *Owner*

Brent L. Salerno, *Co-Owner*

Jesse McCloskey, *Art Handler*

Katie Siede, *Senior Researcher*

Graham Helfrick, *Administrator*

Xin Lian, *Administrative Assistant*

Rita J. Walker, *Controller*

(212) 744-3586

[gallery@questroyalfineart.com](mailto:gallery@questroyalfineart.com)

[www.questroyalfineart.com](http://www.questroyalfineart.com)

NOVEMBER 2024

There are thousands of paintings available for sale at any time. Our reputation depends upon discovering, researching, and acquiring the best at the intersection of merit and value.

Nothing is a better indicator of conviction than the commitment of capital.

For three decades, thousands of the most prominent collectors and museums have purchased the paintings we offer.

LOUIS M. SALERNO, Owner





**Ralph Albert Blakelock (1847-1919)**

*Landscape Silhouette at Twilight*

Oil on panel

7¼ x 10¾ inches

Signed illegibly lower right

**\$48,500**

**Charles Burchfield (1893-1967)**

*Alley Light, 1915*

Watercolor and pencil on paper  
laid down on board

11⅝ x 8⅝ inches (sight size)

Signed and dated lower left:

*Chas Burchfield 1915*

**\$47,500**



**John Fabian Carlson** (1874–1945)

*Sea-Ward Bound*

Oil on canvas

18 x 24 inches

Signed lower right: *John F. Carlson*;  
on stretcher bar: *Sea-ward Bound / John F. Carlson*

**\$32,500**





**Eric Sloane** (1905–1985)

*America Remembered*

Oil on board

23<sup>7</sup>/<sub>8</sub> x 35<sup>7</sup>/<sub>8</sub> inches

Signed lower left: *Eric Sloane*

**\$30,000**

**John Fabian Carlson** (1874–1945)

*Snowy Aisles*

Oil on canvas

25<sup>1</sup>/<sub>16</sub> x 30<sup>1</sup>/<sub>4</sub> inches

Signed lower right: *John F. Carlson*;

on stretcher bar: *Snowy Aisles / John F. Carlson*

**\$40,000**



**Dana Ripley Pond** (1881-1962)

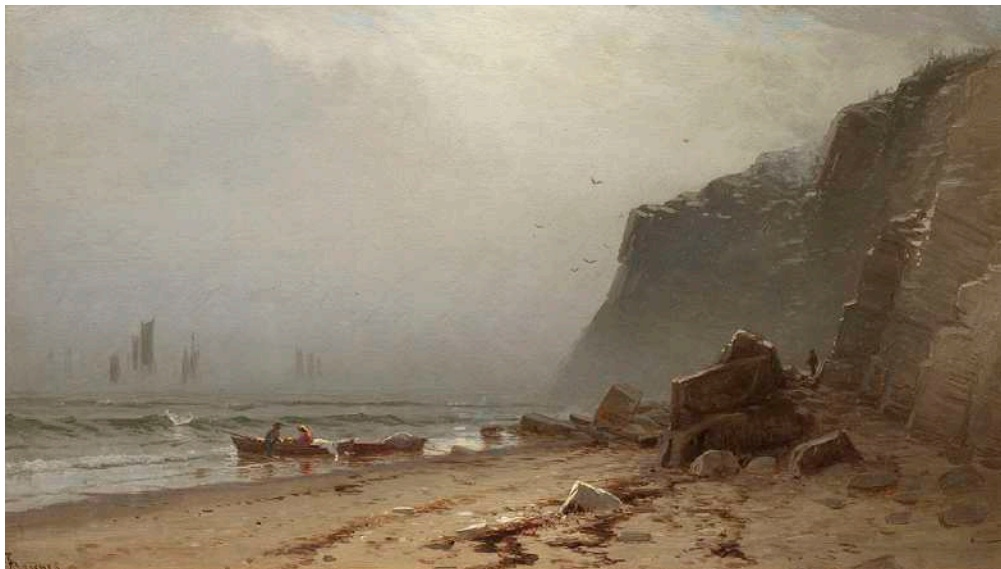
*Portrait of Two Girls*, 1901

Oil on canvas

40<sup>1</sup>/<sub>8</sub> x 30<sup>3</sup>/<sub>8</sub> inches

Signed and dated upper left: *Dana R Pond 01*

**\$19,500**



**Alfred Thompson Bricher** (1837–1908)

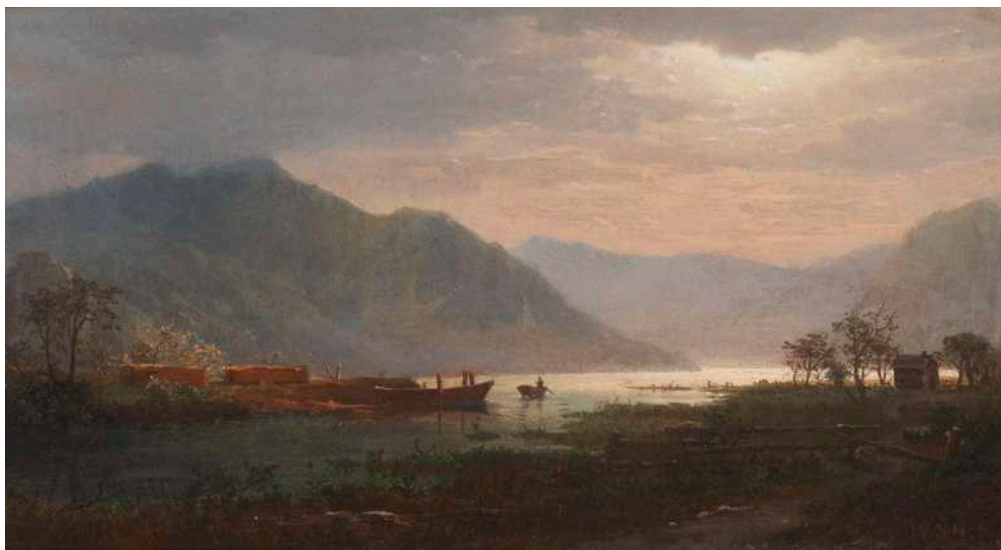
*Lifting Fog, Grand Manan*

Oil on board

11<sup>3</sup>/<sub>4</sub> x 19<sup>7</sup>/<sub>8</sub> inches

Monogrammed lower left: *ATBricher*

**\$80,000**



**William Stanley Haseltine** (1835–1900)

*Morning on the River*

Oil on canvas

8 x 14 inches

Signed lower right: *W.S.H.*

**\$19,500**



**Arthur Cohen** (1928–2012)

*The Bridges*, 1981

Acrylic on canvas

30 x 48 inches

Signed and dated lower right: *Arthur Cohen '81*;

on stretcher bar: *The Bridges – Arthur Cohen –*

*Feb-Mar – '81*

**\$19,500**

**George Curtis** (1826–1881)

*Sailing Outside Boston*

Oil on canvas

16<sup>3</sup>/<sub>16</sub> x 24<sup>3</sup>/<sub>16</sub> inches

Signed lower right: *Geo. Curtis.*

**\$19,000**



**Everett Shinn** (1876–1953)

*The Docks*, 1899

Pastel on joined paper

22<sup>3</sup>/<sub>4</sub> x 22<sup>1</sup>/<sub>4</sub> inches (sight size)

Signed and dated lower right:

EVERETT SHINN / 99

**\$195,000**



**Max Kuehne** (1880–1968)

*Brooklyn Bridge*, 1911

Oil on canvas laid down on board

15 x 18 inches

Signed and dated lower right:

Kuehne / 11

**\$35,000**





**Francis Augustus Silva** (1835–1886)

*At the Seashore*

Oil on panel

4½ x 9 inches

Signed lower right: *SILVA*

**\$21,000**



**Paul Cornoyer** (1864–1923)

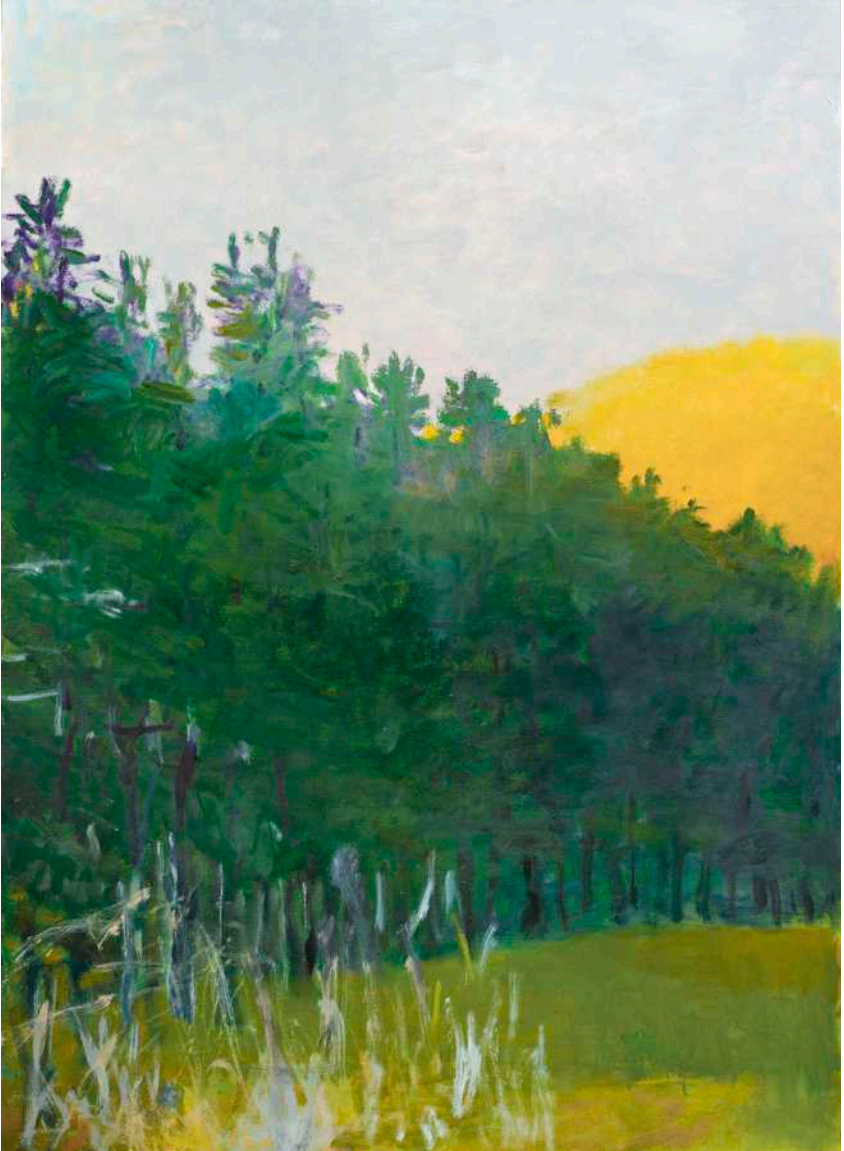
*Chelsea*

Oil on canvas

16 x 20 inches

Signed lower right: *PAUL CORNOYER*

**\$35,000**



**Wolf Kahn** (1927–2020)

*Sunlit Hill*, 2006

Oil on canvas

52 x 38 inches

Signed lower left of center: *W Kahn*;

on stretcher bar: #2006 / 168 *Sunlit Hill*

**\$110,000**



**Emil Carlsen** (1853–1932)

*Blossoming Trees*, 1904

Oil on canvas

34 x 47<sup>1</sup>/<sub>2</sub> inches

Signed and dated lower left: *Emil. Carlsen. 1904*

**\$49,500**



**John Frederick Kensett (1816–1872)**

*At Pasture*

Oil on canvas

10 x 19<sup>7</sup>/<sub>8</sub> inches

**\$75,000**



**George Inness (1825–1894)**

*Campfire at Sunset*, 1867

Oil on canvas

18<sup>1</sup>/<sub>8</sub> x 30<sup>1</sup>/<sub>16</sub> inches

Signed and dated lower left: *G. Inness 1867*

**\$110,000**



**Carl Wuermer (1900–1983)**

*Winter Solitude*

Oil on canvas

30<sup>1</sup>/<sub>8</sub> x 40 inches

Signed lower left: *Carl Wuermer*

**\$24,000**

**Andrew Thomas Schwartz (1867–1942)**

*Palisades in Winter*

Oil on canvas

25<sup>1</sup>/<sub>8</sub> x 30 inches

Signed lower right: *Andrew T. Schwartz*

**\$22,500**



**Guy C. Wiggins** (1883–1962)

*Departing Winter*, 1922

Oil on canvas

20 x 24½ inches

Signed and dated lower left: *Guy Wiggins 1922*;

on verso: *DEPARTING WINTER / Guy Wiggins. / 1922*

**\$29,500**





**John Whorf** (1903–1959)

*The Sloop Catherine*, 1927

Watercolor on paper laid down on board

14¼ x 20½ inches (sight size)

Signed and dated lower right: *John Whorf '27*

**\$21,500**

## QUESTROYAL FINE ART, LLC

Important American Paintings

903 Park Avenue (at 79th Street), Third Floor, New York, NY 10075 T:(212) 744-3586 F:(212) 585-3828

HOURS: Monday–Friday 10–6, Saturday 10–5 and by appointment

EMAIL: [gallery@questroyalfineart.com](mailto:gallery@questroyalfineart.com) [www.questroyalfineart.com](http://www.questroyalfineart.com)