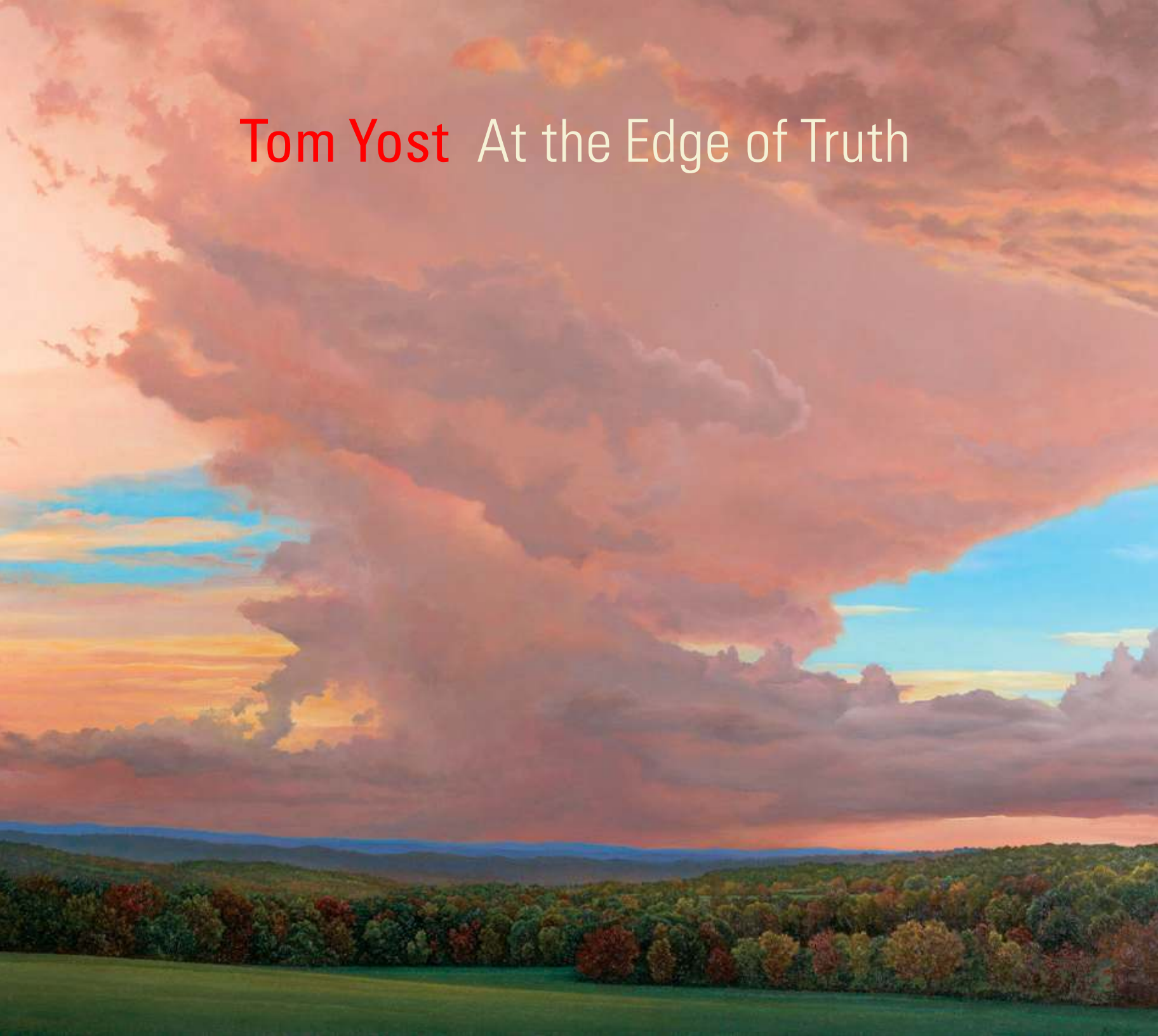


Tom Yost At the Edge of Truth



May 11 – June 2, 2018

An Exhibition and Sale

Tom Yost At the Edge of Truth

Compelling views of an inspiring and life-altering nature so close to home

Louis M. Salerno, *Owner*

Brent L. Salerno, *Co-Owner*

Chloe Heins, *Director*

Nina Sangimino, *Senior Manager, Research and Special Projects*

Ally Chapel, *Senior Administrator*

Jenny Lyubomudrova, *Manager, Research and Logistics*

Kelly Reilly, *Collections Manager*

Eli Sterngass, *Administrative Assistant*

Megan Gatton, *Intern*

Rita J. Walker, *Controller*

QUESTROYAL FINE ART, LLC

903 Park Avenue (at 79th Street), Third Floor, New York, NY 10075

T: (212) 744-3586 F: (212) 585-3828

HOURS: Monday–Friday 10–6, Saturday 10–5 and by appointment

EMAIL: gallery@questroyalfineart.com www.questroyalfineart.com



COVER (DETAIL)

Storm Approaching Painter Ridge, 2016

Oil on linen

30 x 35 inches

Signed and dated lower right: *Yost 2016*

ABOVE

Constitution Marsh, 2018

Oil on linen

16 x 24^{1/8} inches

Signed and dated lower right: *Yost '18*



Mine Hill Preserve, 2016
Oil on linen
15 x 30 inches
Signed and dated lower right: *Yost '16*

At the Edge of Truth

There is no need to travel to remote regions or climb the highest peaks to experience a nature that is always our neighbor. To create the paintings for this exhibition, Tom Yost journeyed only as far as the end of the nearest road to discover nature's perpetual message, one that is ever more vital at this very moment. His paintings are a reminder that we are all at the very edge of a great truth and need only to open a window, travel beyond the concrete, move away from the computer screen, and take a simple hike to experience its restorative powers.

I am very pleased to present Tom's work. There is much to contemplate from an art that celebrates all that man could not create or even imagine. It endures, not until the end of the month or the year, but until the end of time. In this way, his work is aligned with the American masters of previous centuries, yet presents a distinct and modern perspective that permeates a distracted consciousness to deliver a timeless message. It is an art that humbles the viewer and eases the ubiquitous anxiety of a frenetic society that has lost its true north. Tom's work is grounded in the universal and unalterable, in stark contrast to a culture that is ever altered by the fleeting currents of trends and fashions. As such, the therapeutic potential of this work is a viable attribute. It is a rare art that is in possession of both purpose and beauty.

Just as great landscapes can merely suggest the wonders of nature, this catalogue cannot adequately express the potency of Tom's newest paintings. His talent continues to escalate, and those who have not yet seen his most recent work are sure to be very impressed.

LOUIS M. SALERNO, *Owner*

Artist Statement

This exhibition focuses on two regions: the Hudson River Valley in New York State, and the Litchfield Hills in northwestern Connecticut. These areas have been the emphasis of my artistic endeavors over the last twenty years.

I continue to be drawn to the dramatic vistas of the Hudson River Valley. The layering of the mountains and the hills carved out over time present an ongoing challenge and inspiration for me. Almost any viewpoint along the river or in the nearby valleys is worthy of my attention. This is a place where human development has done little to alter the natural environment. Similarly, the Litchfield Hills remain relatively undisturbed. I can walk in any direction from my home in Roxbury, Connecticut, and find a landscape begging to be painted. The farms and land preserves are plentiful, and the peace and serenity they provide remind me of why I choose to live and paint here.

The challenge of creating realism in landscape painting is an ongoing commitment for me as an artist. The composition and geometry of spatial relationships that are presented to me in a landscape are always the impetus for choosing a view. Starting simply before introducing detail allows me to maintain those fundamental geometric forms that my eye finds, while at the same time permitting me to develop precision and realism in the finished state. My goal is to let the viewer feel that he or she could walk right into the painting, to experience a sense of that place as if standing there. I hope that my paintings evoke feelings and memories, and are more than just strict copies of the landscape.

I would like to thank Lou and Brent Salerno for continuing to support my vision with this second exhibition at their gallery. My sincere thanks also to each member of the staff at Questroyal Fine Art who have helped to produce this exhibition.

TOM YOST



Good Hill Farm Preserve, 2016

Oil on linen

12 x 24 inches

Signed and dated lower right: *Yost 2016*.



Spring Farm in Winter, 2018
Oil on linen
12 x 18 inches
Signed and dated lower right: *Yost '18*



Storm Clouds, Matthau Preserve, 2007
Oil on linen
30¹/₄ x 30 inches
Signed and dated lower right: *Yost 07*



Dusk, 2015
Oil on linen
10 x 13½ inches
Signed and dated lower left: *Yost '15*



View from Breakneck Ridge, 2016
Oil on panel
9 x 12 inches
Signed and dated lower left: *Yost '16*



Winter Sunset at Good Hill Farm, 2017
Oil on linen
22 x 24¼ inches
Signed and dated lower right: *Yost '17*



Frozen Marsh, 2016

Oil on linen

14 x 15 1/8 inches

Signed and dated lower right: *Yost '16*



Lake Lillinah, 2017

Oil on linen

8 x 12 inches

Signed and dated lower left: *Yost '17*



Marsh on the Lilly Preserve, 2010
Oil on linen
18¹/₈ x 24¹/₈ inches
Signed and dated lower right: *Yost '10*



Two Hickories, 2016
Oil on linen
15 x 20¹/₁₆ inches
Signed and dated lower right: *Yost '16*



Housatonic Valley, 2011
Oil on linen
24¹/₂ x 48¹/₄ inches
Signed and dated lower right: *Yost '11*



Northern Pasture, Toplands Farm, 2017
Oil on linen
20¹/₁₆ x 30¹/₁₆ inches
Signed and dated lower right: *Yost '17*



Bannerman Castle, 2017
Oil on linen
14 x 24¹/₈ inches
Signed and dated lower left: *Yost '17*



Shawangunk Valley, 2016
Oil on linen
24 x 40³/₈ inches
Signed and dated lower left: *Yost '16*

Shawangunk Ridge, 2016
Oil on linen
14¹/₈ x 28¹/₈ inches
Signed and dated lower right: *Yost '16*



The Hudson River Valley, 2017
Oil on linen
14¹/₁₆ x 24 inches
Signed and dated lower right: *Yost / '17*





The Hudson from Vanderbilt Mansion, 2017

Oil on linen

12¹/₁₆ x 24 inches

Signed and dated lower right: *Yost '17*



Passing Clouds, 2016

Oil on linen

24¹/₈ x 30¹/₈ inches

Signed and dated lower left: *Yost 2016*



Catskills from the Hudson, 2017
Oil on linen
18 x 36¹/₈ inches
Signed and dated lower right: *Yost '17*

Cove at Little Stony Point, 2017
Oil on linen
10¹/₈ x 14 inches
Signed and dated lower right: *Yost '17*

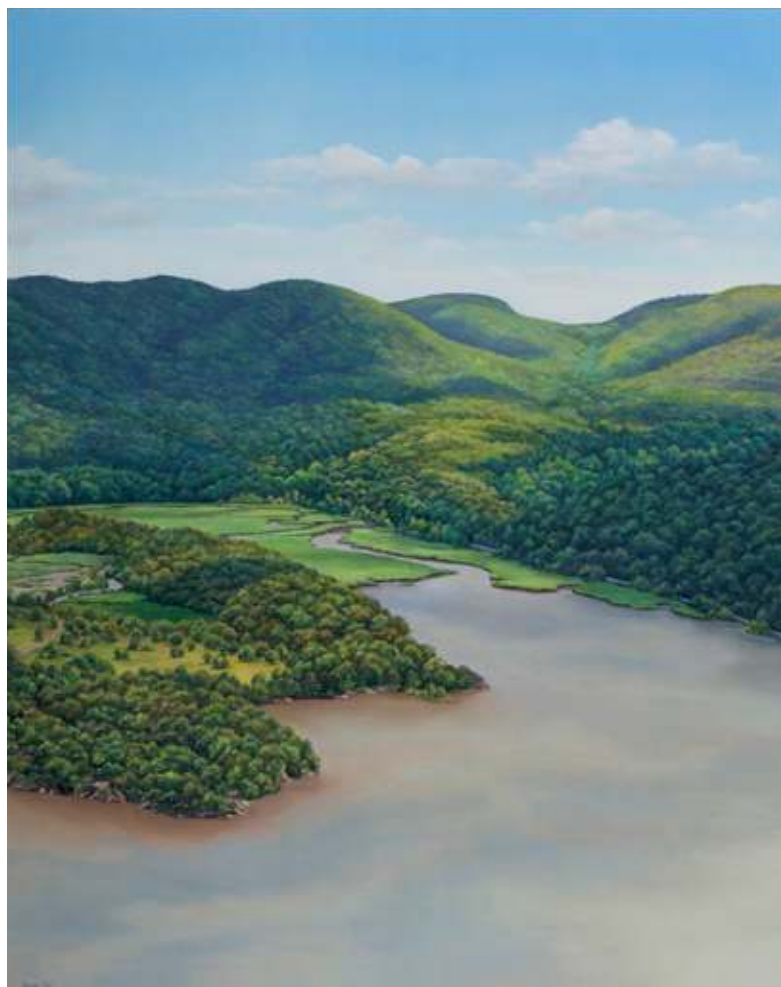


Poets' Walk, 2018
Oil on linen
8¹/₈ x 10 inches
Signed and dated lower right: *Yost 18*





Kent Falls, 2017
Oil on linen
21¹/₈ x 16 inches
Signed and dated lower right: *Yost '17*



Inlet at Bear Mountain, 2017
Oil on linen
20¹/₈ x 16¹/₈ inches
Signed and dated lower left: *Yost '17*



View of Bard Rock, 2015
Oil on linen
12 x 14 inches
Signed and dated lower right: *Yost 15*



Winter Trees, 2013
Oil on linen
12 x 15¹/₁₆ inches
Signed and dated lower left: *Yost '13*



Storm Cloud, 2016
Oil on linen
20¹/₄ x 30 inches
Signed and dated lower right: *Yost '16*



Lake Waramaug from Tanner Hill, 2011
Oil on linen
20¹/₈ x 30³/₈ inches
Signed and dated lower right: *Yost '11*



Stony Point, 2016
Oil on linen
16¹/₈ x 24¹/₁₆ inches
Signed and dated lower left: *Yost '16*



Afternoon in Kent, 2011
Oil on linen
20¹/₈ x 40 inches
Signed and dated lower right: *Yost '11*



Summer Grasses, 2012
Oil on linen
6 x 16 inches
Signed and dated lower right: *Yost '12*



Storm Approaching Painter Ridge, 2016
Oil on linen
30 x 35 inches
Signed and dated lower right: *Yost 2016*



November Afternoon, 2013

Oil on linen

9¹/₈ x 18¹/₁₆ inches

Signed and dated lower left: *Yost '13*

Additional Works in the Exhibition

PLEASE CONTACT US TO
REQUEST AN IMAGE

Iona Island, 2014

Lake George, 2014

Meadow, 2018

Morning Calm, 2014

North Ridge, 2015

Toward West Point, 2018

Exhibition History

AWARDS AND HONORS

July/August 2016

Litchfield Magazine, "Litchfield's Most Influential 2016: The most influential, giving, talented, interesting people in Litchfield"

December 2009

New Britain Museum of American Art, Connecticut, *40th Annual Juried Members Exhibition*, first prize for *Thunderhead*, oil/acrylic award for *Thunderhead*

November 2007

New Britain Museum of American Art, Connecticut, *38th Annual Juried Members Exhibition*, first prize for *Fields on Toplands Farm*

October 2005

Flanders Nature Center & Land Trust, Woodbury, Connecticut, *Four Seasons of Flanders Benefit Gala*, featured artist

April 2004

Chambers of the State Senate Majority Leader, Connecticut State Capitol Building, Hartford, Connecticut, solo exhibition, organized by Connecticut Arts Council

SOLO EXHIBITIONS

Questroyal Fine Art, LLC, New York, New York, *At the Threshold of a Dream, The Hudson River: Tom Yost, A Modern Realist*, October 30–November 21, 2015

New Britain Museum of American Art, Connecticut, *Tom Yost: A Modern Realist*, May 15–September 27, 2015

Behnke-Doherty Gallery, Washington Depot, Connecticut, *Captured Moments: Landscape Paintings by Tom Yost*, September 27–November 11, 2012

Behnke-Doherty Gallery, Washington Depot, Connecticut, *Light's Subtle Touch: The Changing Seasons of the Litchfield Hills, Landscape Paintings by Tom Yost*, November 5–December 19, 2010

P. H. Miller Studio & Gallery, Woodbury, Connecticut, *Autumn 2008 Solo Exhibition, Featuring Original Paintings by Tom Yost*, September 5–October 22, 2008

P. H. Miller Studio & Gallery, Woodbury, Connecticut, *Local Horizons: New Works by Tom Yost*, April 1–May 16, 2006

Chambers of the State Senate Majority Leader, Connecticut State Capitol Building, Hartford, Connecticut, organized by Connecticut Arts Council, April 2004

Washington Art Association, Washington Depot, Connecticut, *Recent Work*, March 6–28, 2004

Minor Memorial Library, Roxbury, Connecticut, *Diverse Landscapes: Winter in Roxbury, Summer in Abiquiu*, October 5–November 14, 2002

Carole Peck's Good News Cafe Gallery, Woodbury, Connecticut, *Atmosphere and Light*, May–June 1996

JURIED EXHIBITIONS

Lyme Art Association, Old Lyme, Connecticut, *New England Landscape Invitational*, September 26–November 7, 2014

Kent Art Association, Connecticut, *President's Show*, July 21–September 2, 2013

New Britain Museum of American Art, Connecticut, *40th Annual Juried Members Exhibition*, December 20, 2009–January 3, 2010 (first prize; oil/acrylic award)

New Britain Museum of American Art, Connecticut, *39th Annual Juried Members Exhibition*, November 2008

New Britain Museum of American Art, Connecticut, *38th Annual Juried Members Exhibition*, November 2007 (first prize)

Mattatuck Museum, Waterbury, Connecticut, *The Connecticut Vision 2004*, September–November 2004

GROUP EXHIBITIONS

Wadsworth Atheneum Museum of Art, Hartford, Connecticut, *Splendor Gala*, October 21, 2017

Mattatuck Museum, Waterbury, Connecticut, *First Look/ New to the Collection*, March 26–May 14, 2017

New Britain Museum of American Art, Connecticut, *14th Annual ART Party of the Year Spring Gala*, May 2014

New Britain Museum of American Art, Connecticut, *13th Annual ART Party of the Year Spring Gala*, May 2013

Shannon's Fine Art Auctioneers, Milford, Connecticut, *Exhibition and Sale of Fine American and European Paintings, Drawings, Prints and Sculpture*, April 15–25, 2013

The Cooley Gallery, Old Lyme, Connecticut, *At Our Best: An Exhibition and Sale of Paintings by Connecticut Artists, 1830–2013*, February–March 30, 2013

The Cooley Gallery, Norwalk, Connecticut, *Fairfield Antique Show*, December 1–2, 2012

New Britain Museum of American Art, Connecticut, *12th Annual ART Party of the Year Spring Gala*, May 2012

Shannon's Fine Art Auctioneers, Milford, Connecticut, *Exhibition and Sale of Fine American and European Paintings, Drawings, Sculpture and Prints*, October 17–27, 2011

New Britain Museum of American Art, Connecticut, *11th Annual ART Party of the Year Spring Gala*, May 2011

Washington Art Association, Washington Depot, Connecticut, *Lake Waramaug Observed*, August–September 2010

Minor Memorial Library, Roxbury, Connecticut, *Images of the Roxbury Land Trust*, June–July 2010

New Britain Museum of American Art, Connecticut, *10th Annual ART Party of the Year Spring Gala*, May 2010

Shannon's Fine Art Auctioneers, Milford, Connecticut, *Exhibition and Sale of Fine American and European Paintings, Drawings, and Sculpture*, April 12–29, 2010

Owen Gallery, West Palm Beach, Florida, *Palm Beach Jewelry, Art & Antique Show*, February 13–26, 2010

The Cooley Gallery, Old Lyme, Connecticut, *Holiday Exhibition*, December 2009

New Britain Museum of American Art, Connecticut, *9th Annual ART Party of the Year Spring Gala*, May 2009

Shannon's Fine Art Auctioneers, Greenwich, Connecticut, *Exhibition and Sale of Fine American and European Paintings, Drawings, Prints, and Sculpture*, October 27, 2008

Flanders Nature Center & Land Trust, Woodbury, Connecticut, *Flanders Benefit Auction*, October 2008

The Cooley Gallery, Old Lyme, Connecticut, *19th Annual Holiday Exhibition*, November 2007–January 2008

Flanders Nature Center & Land Trust, Woodbury, Connecticut, *Flanders Benefit Auction*, October 2007

P. H. Miller Studio & Gallery, Woodbury, Connecticut, *Black Tie*, November 2006–January 2007

The Cooley Gallery, Old Lyme, Connecticut, *18th Annual Holiday Exhibition*, November 2006–January 2007

Booth Free School, Roxbury, Connecticut, *Fall 2006 Auction*, September 2006

P. H. Miller Studio & Gallery, Woodbury, Connecticut, *Black Tie*, November 2005–January 2006

Flanders Nature Center & Land Trust, Woodbury, Connecticut, *Four Seasons of Flanders Benefit Gala*, October 2005 (featured artist)

P. H. Miller Studio & Gallery, Woodbury, Connecticut, *Black Tie*, November 2004–January 2005

Flanders Nature Center & Land Trust, Woodbury, Connecticut, *Flanders Benefit Auction*, October 2004

P. H. Miller Studio & Gallery, Woodbury, Connecticut, *The Modern Landscape*, May–June 2004

Flanders Nature Center & Land Trust, Woodbury, Connecticut, *Flanders Benefit Auction*, October 2003

Potter & Slack Fine Arts, New Preston, Connecticut, *Winter in August*, August–September 2003

Washington Art Association, Washington Depot, Connecticut, *Members Show*, April 2003

Potter & Slack Fine Arts, New Preston, Connecticut, *Winter in August*, August–September 2002

Carrie Haddad Gallery, Hudson, New York, *Landscapes*, August 1997

Holland and Wilson Fine Art, Bedford, New York, May–June 1997

PUBLICATIONS

“Litchfield’s Most Influential 2016: The most influential, giving, talented, interesting people in Litchfield,” *Litchfield Magazine* (July/August 2016).

At the Threshold of a Dream, The Hudson River: Tom Yost, A Modern Realist (New York: Questroyal Fine Art, LLC, 2015).

Tom Yost: A Modern Realist, Paintings of the Litchfield Hills, 2000–2014, intr. by Douglas K. S. Hyland (New Britain, CT: New Britain Museum of American Art, 2015).

“Tom Yost’s ‘Captured Moments’ at Behnke-Doherty Gallery, Washington, CT,” *The Country and Abroad* (September/October 2012).

Tracey O’Shaughnessy, “Yost Offers Wintry Balm with Summery Paintings,” *Republican-American*, September 28, 2011.

“Tom Yost’s Landscape Paintings at Behnke-Doherty Gallery in Washington Depot, CT,” *The Country and Abroad* (winter 2010–2011).

Jaime Ferris, “New Show: Landscapes by Tom Yost,” *Litchfield County Times*, November 12, 2010.

“Tom Yost: On the Edge,” *American Art Collector* (November 2010): 158.

Jack Coraggio, “Yost’s Neighborly Visions,” *Litchfield County Times Magazine* (September 2008).

Tracey O’Shaughnessy, “Tom Yost,” *Connecticut Magazine* (April 2008).

Tracey O’Shaughnessy, “Get Real: Roxbury’s Tom Yost Has Mastered a Higher Level of Truth in His Most Recent Works,” *Republican-American*, April 9, 2006.

“Destination Woodbury: Tom Yost’s Work as a Conservator of Famous American Art Brings a Classic Feel and Longevity to His Paintings,” *American Art Collector* (April 2006).

Jaime Ferris, “Local Horizons: Roxbury Painter, Tom Yost to Open Show of New Works in Woodbury,” *Litchfield County Times*, March 24, 2006.

Tracey O’Shaughnessy, “Study in Contrast,” *Antiques and The Arts Weekly*, September 16, 2004.

Tracey O’Shaughnessy, “Broken, Now Whole,” *Republican-American*, May 20, 2004.

David Lombino, “Apprentice No Longer: Lessons from Restorations Fuel Roxbury Artist’s Work,” *Litchfield County Times*, October 4, 2002.

COLLECTIONS

Florence Griswold Museum, Old Lyme, Connecticut

Mattatuck Museum, Waterbury, Connecticut

New Britain Museum of American Art, Connecticut

Private collections

Town of Roxbury, Connecticut



DESIGN: Malcolm Grear Designers PRINTING: Meridian Printing PHOTOGRAPHY: Timothy Pyle, Light Blue Studio

Sunrise from Gold Mine Road, 2017

Oil on linen

12 x 18 inches

Signed and dated lower left: *Yost '17*

BACK COVER

Walkway Across the Hudson, 2017

Oil on linen

14¹/₈ x 32 inches

Signed and dated lower left: *Yost '17*



QUESTROYAL FINE ART, LLC

Important American Paintings

903 Park Avenue (at 79th Street), Third Floor, New York, NY 10075 T:(212) 744-3586 F:(212) 585-3828

HOURS: Monday–Friday 10–6, Saturday 10–5 and by appointment

EMAIL: gallery@questroyalfineart.com www.questroyalfineart.com