



# THE UNEXPECTED

**An Exhibition and Sale**  
**May 5–27, 2022**

**An Exhibition and Sale**  
**May 5–27, 2022**

**QUESTROYAL FINE ART, LLC**

Louis M. Salerno, *Owner*

Brent L. Salerno, *Co-Owner*

Chloe Heins, *Director*

Nina Sangimino, *Assistant Director*

Pavla Berghen-Wolf, *Research Associate*

Kayla Seifert, *Administrator*

Jesse McCloskey, *Art Handler*

Jen Earthman, *Administrative Assistant*

Rita J. Walker, *Controller*

**(212) 744-3586**

**[gallery@questroyalfineart.com](mailto:gallery@questroyalfineart.com)**

**[www.questroyalfineart.com](http://www.questroyalfineart.com)**

MAY 2022

# THE UNEXPECTED

**Defying expectations to encourage all  
to choose with their hearts**

Many of these paintings are not consistent with what we are known to offer. They diverge in some way by period, subject matter, or composition. Others are better aligned with our aesthetic but are distinguished by one or more atypical artistic qualities. Finally, a few are not by American painters.

All of this, so that you will come to expect the unexpected from Questroyal.

LOUIS M. SALERNO, Owner





**F. Edwin Church** (1876–1975)

*Lily Pads*, 1958

Oil on canvas

26<sup>1</sup>/<sub>8</sub> x 32<sup>1</sup>/<sub>8</sub> inches

Signed and dated upper right: *F Edwin Church / 58*

**Asking price: \$15,000**

**Paul Lantz** (1908–2000)

*New York Street Scene*, 1940

Oil on canvas

32<sup>3</sup>/<sub>16</sub> x 24<sup>1</sup>/<sub>8</sub> inches

Signed and dated lower right: *PAUL LANTZ 1940*

**Asking price: \$29,000**



**Wolf Kahn** (1927-2020)

*Evening Pines*, 1995

Oil on canvas

30 x 26 inches

Signed lower right: *W Kahn*; on verso: #86-1995;  
on stretcher bar: #86 1995 *Evening Pines* 30 x 26

**Asking price: \$90,000**

**Wolf Kahn** (1927-2020)

*Untitled (Bridle Path, Vermont)*

Oil on canvas

30 x 42<sup>3</sup>/<sub>4</sub> inches

Signed lower right: *W. Kahn*

**Asking price: \$75,000**

**Leon Dolice** (1892-1960)

*New York Nocturne*

Oil on canvas

20<sup>1</sup>/<sub>8</sub> x 25<sup>1</sup>/<sub>16</sub> inches

Signed lower right: *DOLICE*

**Asking price: \$17,500**







**Childe Hassam** (1859–1935)

*Gardiner's Bay*, 1903

Watercolor on paper

14 $\frac{1}{2}$  x 21 $\frac{1}{2}$  inches

Signed and dated lower left: *Childe Hassam 1903*

**Asking price: \$85,000**

**André Hambourg** (1909–1999)

*Bateaux de pêche au large Deauville*  
(*Fishing Boats off Deauville*)

Oil on canvas

8 $\frac{3}{4}$  x 13 $\frac{3}{4}$  inches

Signed lower left: *a. hambourg*; on verso:

*a. h. / "Bateaux de pêche, / au large de / Deauville"*

**Asking price: \$12,500**

**Julian Onderdonk** (1882–1922)

*Winter Morning, Sullivan County, New York*, 1909

Oil on panel

9 $\frac{15}{16}$  x 14 inches

Signed lower right: *-Julian Onderdonk-*; on verso: *-Winter Morning, Sullivan Co. N.Y. / -Julian Onderdonk-1909-*

**Asking price: \$23,500**



**Dale Nichols** (1904–1995)

*Alaska (Paradise)*, 1938

Tempera on paper

7<sup>1</sup>/<sub>4</sub> x 10<sup>1</sup>/<sub>2</sub> inches (sight size)

Signed, inscribed, and dated lower left:

*DALE NICHOLS · ALASKA '38*

**Asking price: \$19,000**







**Ben Bauer** (b. 1980)

*Midnight at 20 Below, 2021*

Oil on board

30 x 40 inches

Signed lower right: *BEN BAUER*;

on verso: *MIDNIGHT AT 20 BELOW /*

*30 X 40 OIL ON BOARD / BEN BAUER 2021*

**Asking price: \$24,000**



**Peter Sculthorpe** (b. 1948)

*Ridge Line, 2020*

Oil on linen

18<sup>1</sup>/<sub>16</sub> x 47 inches

Signed lower right: *P Sculthorpe*;

on verso: *"Ridge Line" / oil on Linen - 18" x 47" /*

© 2020 *P Sculthorpe*

**Asking price: \$37,500**



**Andrew Wyeth** (1917–2009)

*Berry Pickers*, 1938

Watercolor on paper

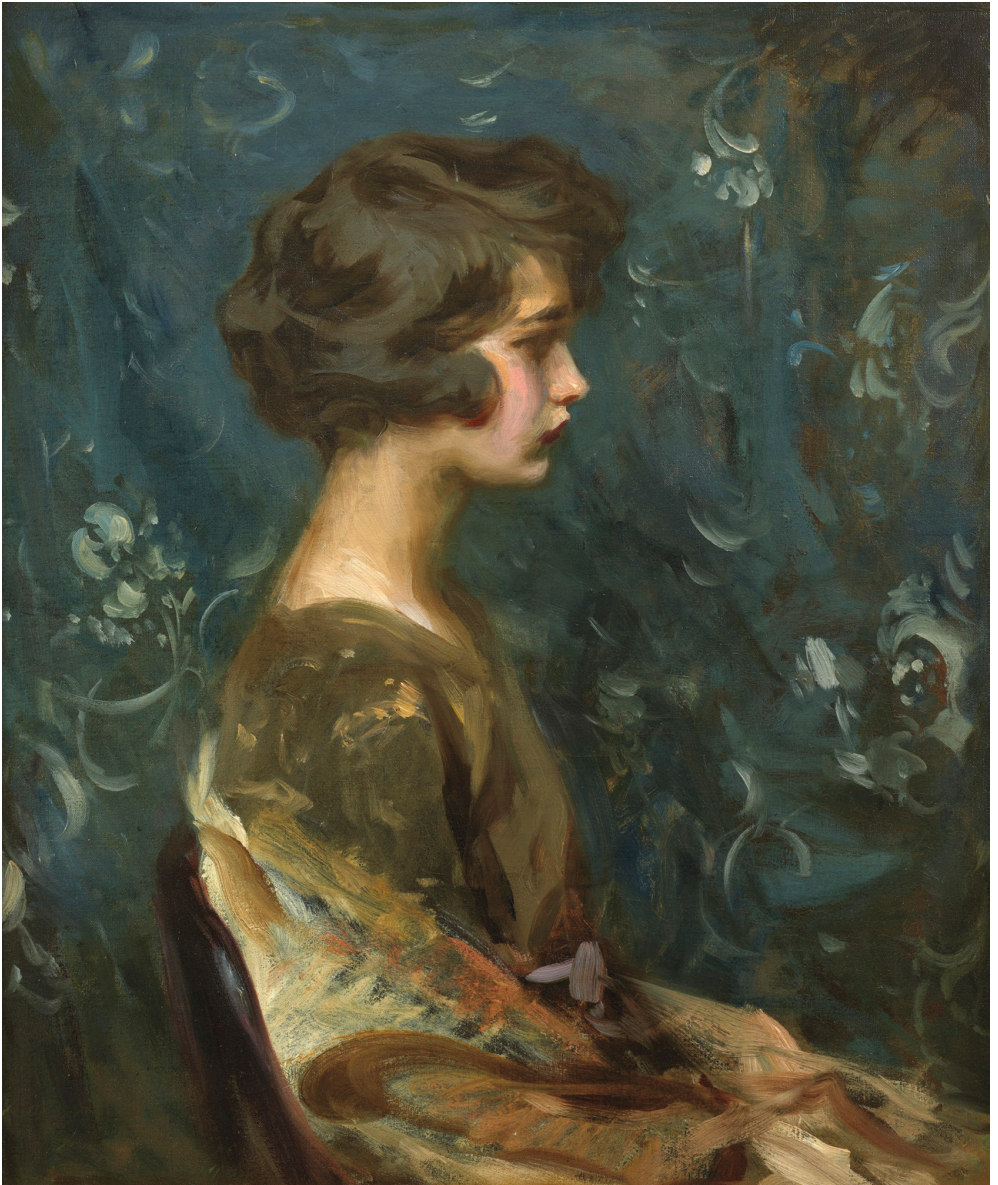
12¼ x 9½ inches (sight size)

Inscribed and signed lower right:

*ROUGH SKETCH / ANDREW WYETH*

**Asking price: \$165,000**

© 2022 Andrew Wyeth / Artists Rights Society (ARS),  
New York



**Irving Ramsay Wiles (1861–1948)**

*Consuelo*

Oil on canvas

30<sup>1</sup>/<sub>8</sub> x 25<sup>1</sup>/<sub>8</sub> inches

**Asking price: \$95,000**



**Louis Michel Elshemius** (1864–1941)

*Sails in Cuba*

Oil on board

9<sup>7</sup>/<sub>8</sub> x 14<sup>15</sup>/<sub>16</sub> inches

Signed lower left: *Elshemius*.

**Asking price: \$12,500**



**Harry Leith-Ross** (1886–1973)

*Datura*

Oil on board

10<sup>7</sup>/<sub>16</sub> x 8<sup>7</sup>/<sub>16</sub> inches

**Asking price: \$18,500**



**Hayley Lever** (1876–1958)

*Moonlight over Marblehead, Massachusetts*, 1914

Oil on canvas

10<sup>1</sup>/<sub>8</sub> x 12 inches

Signed lower right: *Hayley Lever*; on stretcher bar:

*Moonlight over Marblehead. MASS. 1914 /*

*1876 Hayley Lever – 1958 / R.W.A – R.A – N.A.*

**Asking price: \$22,500**

**Claggett D. Spangler** (1848–1911)

*Catskill Mountain House*

Oil on canvas

21<sup>7</sup>/<sub>8</sub> x 42 inches

Monogrammed lower right: *C Spangler*

**Asking price: \$67,500**

**George William Sotter** (1879–1953)

*Bucks County Nocturne*

Oil on board

16 x 20 inches

Signed lower right: *G. W. Sotter*

**Asking price: \$165,000**





**Ralph Albert Blakelock** (1847-1919)

*Landscape Silhouette at Twilight*

Oil on panel

7 $\frac{1}{4}$  x 10 $\frac{3}{4}$  inches

Signed illegibly lower right

**Asking price: \$48,500**



**Emmanuel Mané-Katz** (1894–1962)

*L'Abajour (The Lampshade)*

Gouache on paper

18<sup>15</sup>/<sub>16</sub> x 23<sup>3</sup>/<sub>4</sub> inches

Signed upper right: *Mané-Katz*

**Asking price: \$18,500**

## QUESTROYAL FINE ART, LLC

Important American Paintings

903 Park Avenue (at 79th Street), Third Floor, New York, NY 10075 T:(212) 744-3586 F:(212) 585-3828

HOURS: Monday–Friday 10–6, Saturday 10–5 and by appointment

EMAIL: [galler@questroyalfineart.com](mailto:galler@questroyalfineart.com) [www.questroyalfineart.com](http://www.questroyalfineart.com)