



THE CREATIVE IMPULSE

AND

A SPECIAL SNEAK PEEK
OF OUR MAJOR UPCOMING
EXHIBITION AND SALE

THE CREATIVE IMPULSE

QUESTROYAL FINE ART, LLC

Louis M. Salerno, *Owner*

Brent L. Salerno, *Co-Owner*

Chloe Heins, *Director*

Nina Sangimino, *Assistant Director*

Pavla Berghen-Wolf, *Research Associate*

Jacob Rubin, *Collections Manager*

Kayla Seifert, *Administrator*

Rita J. Walker, *Controller*

(212) 744-3586

gallery@questroyalfineart.com

www.questroyalfineart.com

FEBRUARY 2020

Eric Sloane (1905–1985)

The Glass Ball Vane

Oil on board

20 x 26 inches

Signed and inscribed lower left:

ERIC / SLOANE / NA;

on verso: THE GLASS BALL VANE

Asking price: \$19,500



In the first section of this two-part presentation, we present paintings that demonstrate the creative vision of several important American painters. These are inspired works that are unique and without the constraint of any formulaic method. In Jamie Wyeth's *Pipe and Tree*, he juxtaposes the beauty of nature with an unsightly manmade object. Alex Katz's monochromatic *Swamp Maple* is intentionally understated, compelling us to imagine color. By compressing and elongating, Ralph Albert Blakelock created ultra-vertical landscapes that threaten to burst beyond the confines of the panel. These and other works are examples of artists brave enough to give form to their creative impulses.

The second section is a sneak peek of what will be the most dynamic exhibition and sale of Hudson River School paintings in modern times: *Ten Great American Painters and Their Brilliant Rivals*. I personally invite each of you to join us on March 5, 11 a.m. to 8 p.m., for a special preview day of the exhibition. Over 130 paintings will be on view here at Questroyal Fine Art from March 6 through March 28, and your catalogue will arrive on or before March 1.

LOUIS M. SALERNO, Owner

Edmund W. Greacen (1876–1949)

A Day at the Beach, 1922

Oil on canvas

16¹/₈ x 23⁷/₈ inches

Signed and dated lower right:

Edmund Greacen - / - 1922 -

Asking price: \$35,000



Everett Shinn (1876–1953)

The Postman

Pastel on paper

14¹/₂ x 21¹/₂ inches (sight size)

Signed and indistinctly dated

lower right: E SHINN / 19 [illegible]

Asking price: \$175,000



Johann Berthelsen (1883–1972)

Winter Brooklyn Bridge

Oil on canvas

25¹/₁₆ x 30 inches

Signed lower right:

Johann Berthelsen

Asking price: \$35,000





Childe Hassam (1859–1935)
*Appledore Island,
Isles of Shoals, Maine, 1906*
Watercolor on paper
13¹/₄ x 19¹/₄ inches (sight size)
Signed and dated lower left:
Childe Hassam 1906

Asking price: \$65,000



Henry Martin Gasser (1909–1981)
Study for "Return to Slag Valley"
Watercolor and gouache on paper
18³/₄ x 22³/₄ inches (sight size)
Signed lower right: *H. GASSER*;
on verso: *STUDY FOR /*
"RETURN TO SLAG VALLEY" /
HENRY GASSER, N.A.

Asking price: \$27,500



Jamie Wyeth (b. 1946)
Pipe and Tree
Watercolor on paper
18¹/₂ x 23¹/₄ inches (sight size)
Signed lower right: *Jamie Wyeth*

Asking price: \$47,500



Joseph Stella (1877–1946)
Yellow Lily, 1944
Silverpoint and crayon on paper
13³/₄ x 10⁵/₈ inches (sight size)
Signed and dated lower left:
Joseph / Stella 1944;
estate stamp upper left

Asking price: \$12,500



Alex Katz (b. 1927)
Swamp Maple, 1981
Oil on board
15³/₄ x 12 inches
Signed and dated lower left:
Alex Katz 81

Asking price: \$55,000



Charles Burchfield (1893–1967)
Trees, 1917
Gouache and watercolor on paper
laid down on board
20³/₄ x 17⁵/₈ inches (sight size)
On verso: *April 14, 1917*

Asking price: \$57,500

Bierstadt
Church
Cole
Cropsey
Durand
Gifford
Kensett
Moran
Richards
Whittredge

Sneak Peek

TEN GREAT AMERICAN PAINTERS AND THEIR BRILLIANT RIVALS

An Exhibition and Sale
of over 130 paintings

March 6–28, 2020

Special preview day,
March 5, 11 a.m.–8 p.m.

Hermann Herzog (1831–1932)
Morning Fisherman, 1882
Oil on canvas
40⁵/₈ x 33¹/₈ inches
Signed and dated lower left:
H. Herzog 1882



Albert Bierstadt (1830–1902)
Pass into the Rockies
Oil on board
19¹⁵/₁₆ x 13⁷/₈ inches
Monogrammed lower left: *AB*



Sanford Robinson Gifford (1823–1880)
*October on the Bronx,
A Study from Nature*, 1876
Oil on board
8 x 6⁷/₈ inches
Initialed and dated lower right:
SRG Oct 1876;
on verso: *Bronx River / Oct 20 1876*



Jasper Francis Cropsey (1823–1900)
October on the Hudson, 1886
Oil on canvas
18 x 38¹/₈ inches
Signed and dated lower left:
J.F. Cropsey / 1886–

Alexander Helwig Wyant
(1836–1892)
*Lake Placid and Whiteface
in the Adirondacks*
Oil on canvas
18 x 30 inches
Signed lower right: *A HWyant*



Asher B. Durand (1796–1886)
Dutchess County, New York
Oil on canvas
14¹/₁₆ x 21⁵/₁₆ inches
Initialed lower right: *ABD*





Ralph Albert Blakelock (1847–1919)

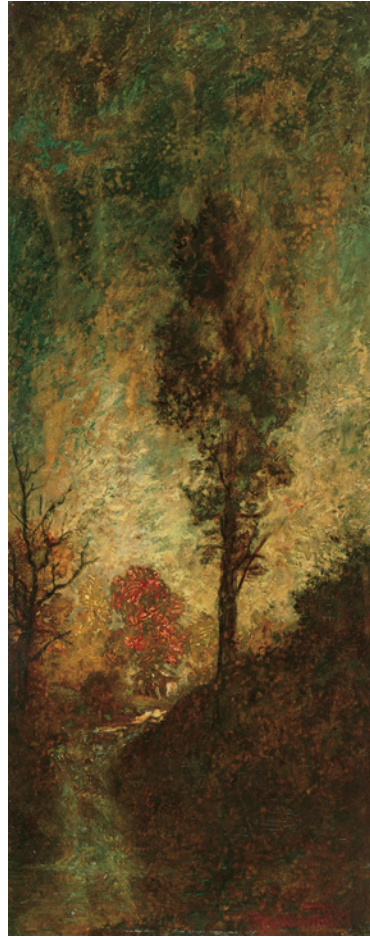
*Landscape with Pond,
East Orange, New Jersey*

Oil on panel

15 x 6 inches

Signed lower right in arrowhead:
Blakelock

Asking price: \$45,000



Ralph Albert Blakelock (1847–1919)

*Landscape with Waterfall,
East Orange, New Jersey*

Oil on panel

15 x 6 inches

Signed lower right in arrowhead:
Blakelock

Asking price: \$45,000

QUESTROYAL FINE ART, LLC

Important American Paintings

903 Park Avenue (at 79th Street), Third Floor, New York, NY 10075 T:(212) 744-3586 F:(212) 585-3828

HOURS: Monday–Friday 10–6, Saturday 10–5 and by appointment

EMAIL: gallery@questroyalfineart.com www.questroyalfineart.com