

The background of the entire page is a painting by Arthur Cohn. It depicts a street scene with several silhouetted figures. In the foreground, a man in a dark coat and hat stands on the left, looking towards the right. In the middle ground, a vintage car is parked. To the right, another figure is walking, and in the background, two more figures are walking together. The scene is set against a bright, yellowish background, possibly representing a sunset or a brightly lit street. The overall mood is somber and contemplative.

FAME IS EXPENSIVE

EXCELLENCE IS PRICELESS

18 artistic achievements

Sensibly priced by merit not celebrity

FAME IS EXPENSIVE EXCELLENCE IS PRICELESS

QUESTROYAL FINE ART, LLC

Louis M. Salerno, *Owner*

Brent L. Salerno, *Co-Owner*

Chloe Heins, *Director*

Kayla Seifert, *Gallery Manager*

Jesse McCloskey, *Art Handler*

Katie Siede, *Research Associate*

Eamonn Smith, *Administrator*

Rita J. Walker, *Controller*

(212) 744-3586

gallery@questroyalfineart.com

www.questroyalfineart.com

NOVEMBER 2022

18 artistic achievements

Sensibly priced by merit not celebrity

Fame is alluring and expensive, but it is not a prerequisite for excellence. It is determined by popular opinion which may differ from that of the most important arbiter of quality—you!

For those that refuse to allow opinion to dictate matters of the heart, the best values in art are often works by artists who have remained just beyond the reach of the footlights.

This catalogue presents paintings that rise to excellence, which is far more affordable and valuable than fame.

LOUIS M. SALERNO, *Owner*





Charles Courtney Curran (1861–1942)

Gathering Flowers, 1911

Oil on canvas

20 x 16 inches

Signed and dated lower right:

CHARLES C. CURAN. / 1911

\$110,000

George Henry Smillie (1840–1921)

New England Coast Scene

Oil on canvas

20³/₈ x 30³/₈ inches

Signed and inscribed lower left:

Geo. H. Smillie - N.Y.

\$24,000



Ben Bauer (b. 1980)

Lake Elmo Farm by Moonlight, 2013

Oil on linen laid down on board

32¹/₁₆ x 35 inches

Signed and dated lower left:

BEN BAUER 2013

\$24,000

Arthur Vidal Diehl (1870–1929)

A Ship's Bones on the Beach, 1907

Oil on canvas

12¹/₈ x 18 inches

Signed and dated lower left:

Arthur V. Diehl. 1907.

\$13,500



Joseph Stella (1877–1946)

Bird in Flight

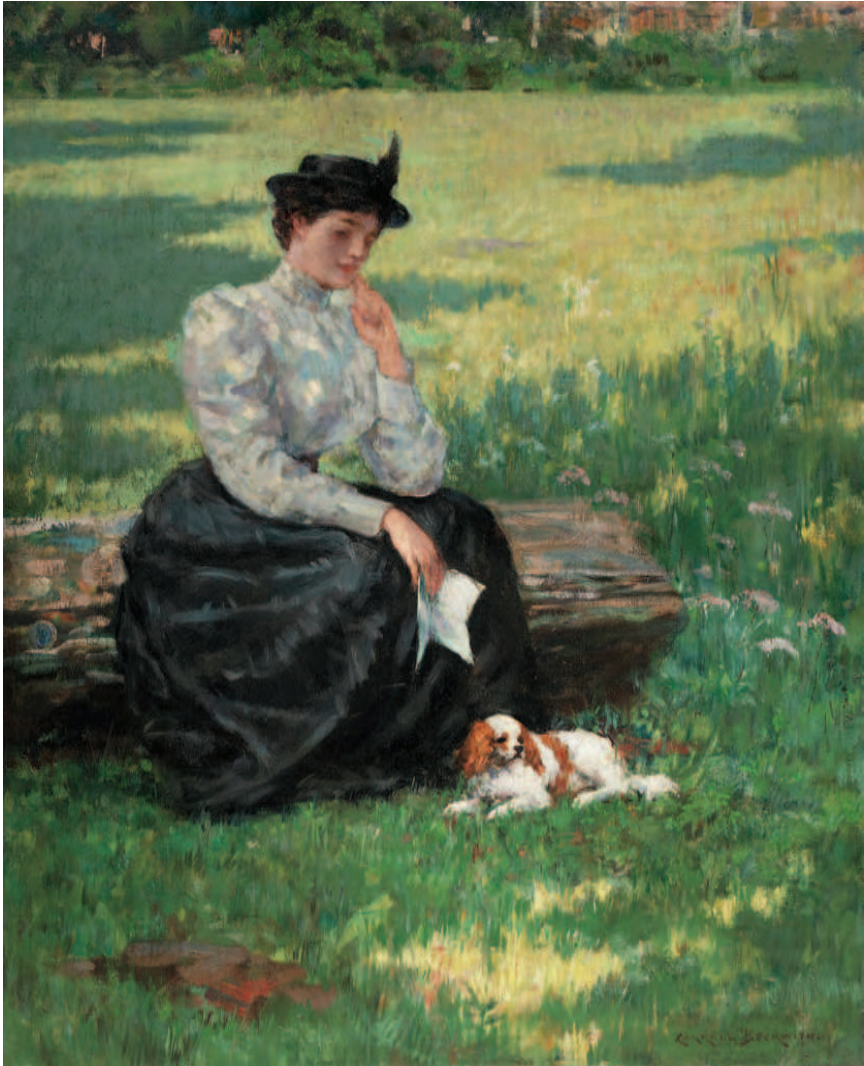
Mixed media on paper

20⁷/₈ x 20⁷/₈ inches (round) (sight size)

Signed lower right: *Jo. Stella*

\$24,500





James Carroll Beckwith (1852–1917)

The Letter

Oil on canvas

20 x 16 inches

Signed lower right: *CARROLL BECKWITH.*

\$90,000



Jane Freilicher (1924–2014)

Northeast View, 1975

Oil on canvas

47 x 50¹/₈ inches

Signed lower right: *Jane Freilicher*;
on stretcher bar: "*Northeast View*" 1975
Jane Freilicher 47" x 50" / oil / canvas

\$135,000



George Luks (1867–1933)

Road to the Water

Watercolor and gouache on paper

15¹/₈ x 18⁷/₈ inches

Signed lower right: *George Luks*

\$55,000





Eric Sloane (1905–1985)

Bucks County Barn

Oil on board

24 x 47⁵/₈ inches

Inscribed and signed lower left:

BUCKS COUNTY / -ERIC SLOANE

\$45,000



Guy C. Wiggins (1883–1962)

Lower New York, Winter

Oil on canvas board

15⁷/₈ x 11⁷/₈ inches

Signed and inscribed lower right:

Guy Wiggins NA

\$77,500



Johann Berthelsen (1883-1972)

United Nations from the East River, New York

Oil on canvas

20 x 24¹/₈ inches

Signed lower right: *Johann Berthelsen*; on stretcher

bar: *United / Nations New York Johann Berthelsen*

\$29,500



Oscar Bluemner (1867–1938)

Venus, 1924

Watercolor and pencil on paper

5 x 6³/₄ inches

Monogrammed lower left: *OFB*; inscribed, dated, and monogrammed left margin: *Eliz Nov 13-24 65W OFB*

\$57,500





Everett Shinn (1876–1953)
Fulton Ferry, Brooklyn Bridge, 1942
Pastel on paper
11¹/₄ x 16¹/₄ inches (sight size)
Signed and dated lower right:
EVERETT SHINN / 1942.

\$135,000

Max Arthur Cohn (1903–1998)
New York City Scene
Oil on canvas board
16 x 19⁷/₈ inches
Signed lower left: *MAX ARTHUR COHN*

\$19,000



Emile Albert Gruppe
(1896–1978)

Leaving the Dock

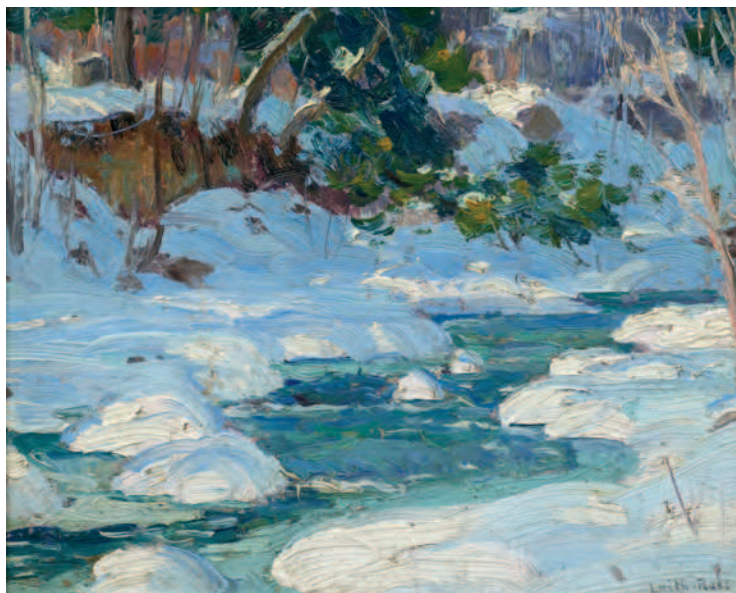
Oil on canvas

20¹/₈ x 18¹/₈ inches

Signed lower right:

Emile A. Gruppe

\$19,000



Harry Leith-Ross
(1886–1973)

Snow on the West Bank

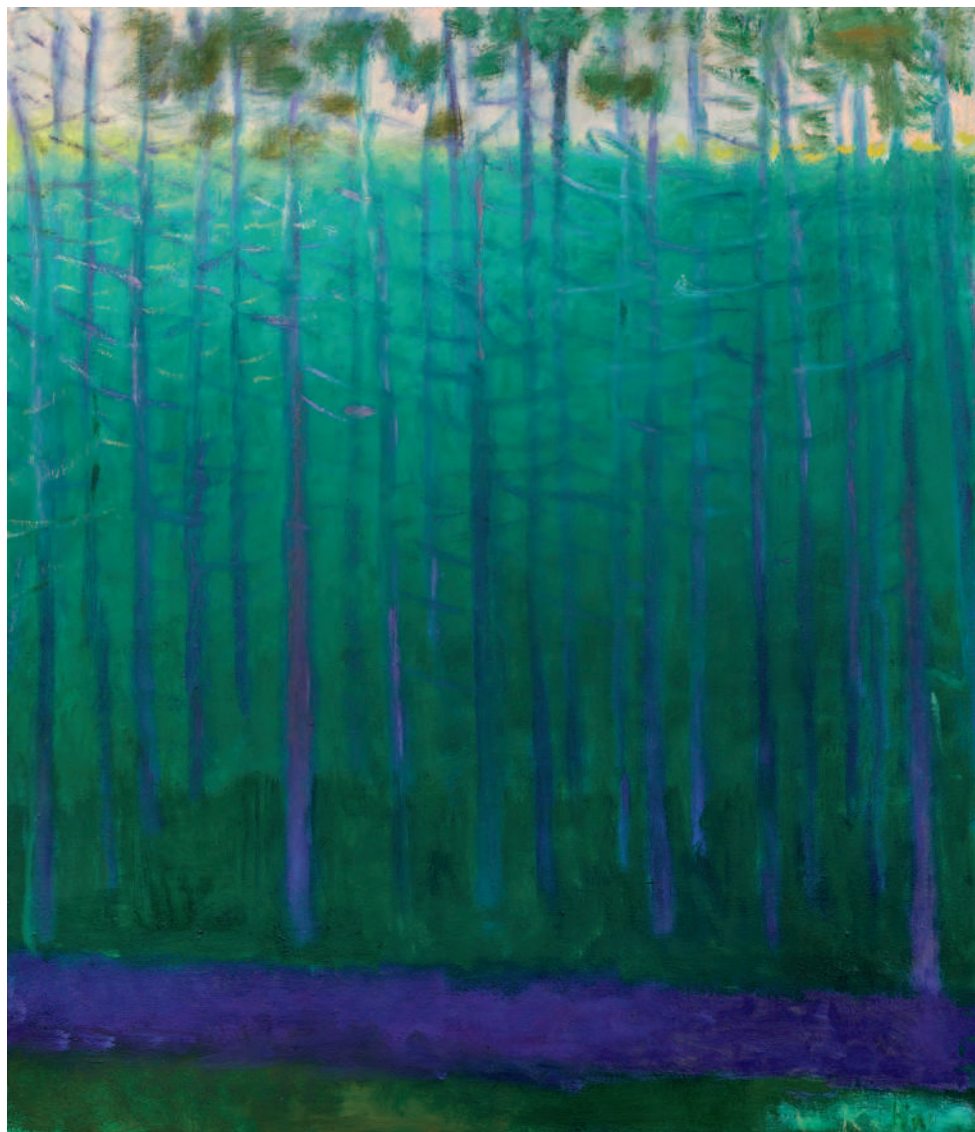
Oil on board

8¹/₄ x 10¹/₄ inches

Signed lower right:

Leith-Ross

\$17,500



Wolf Kahn (1927-2020)

Evening Pines, 1995

Oil on canvas

30 x 26 inches

Signed lower right: *W Kahn*; on verso: #86-1995;
on stretcher bar: #86 1995 *Evening Pines* 30 x 26

\$90,000



Frederick J. Mulhaupt (1871–1938)

Winter Calm

Oil on canvas

40 x 44¹/₈ inches

Signed lower left: *MULHAUPT*—

\$75,000

QUESTROYAL FINE ART, LLC

Important American Paintings

903 Park Avenue (at 79th Street), Third Floor, New York, NY 10075 T:(212) 744-3586 F:(212) 585-3828

HOURS: Monday–Friday 10–6, Saturday 10–5 and by appointment

EMAIL: galler@questroyalfineart.com www.questroyalfineart.com