

An impressionistic painting of a busy market scene. The scene is viewed through a dark, vertical frame, possibly a doorway or a window. On the left, there are wooden stalls with various items on display. In the center, a person in a blue shirt is seen from behind, looking towards a stall. To the right, another person in a blue shirt is visible, and a white horse is partially seen. The foreground shows a person in a green shirt and another person in a red shirt, both appearing to be engaged in a transaction or conversation. The overall style is characterized by bold, expressive brushstrokes and a rich, warm color palette dominated by reds, oranges, yellows, and blues. The lighting is dramatic, with strong highlights and deep shadows, creating a sense of depth and activity.

THE GIFT OF A LIFETIME

Selections Under \$50,000

THE GIFT OF A LIFETIME

Selections Under \$50,000

QUESTROYAL FINE ART, LLC

Louis M. Salerno, *Owner*

Brent L. Salerno, *Co-Owner*

Chloe Heins, *Director*

Kayla Seifert, *Gallery Manager*

Jesse McCloskey, *Art Handler*

Katie Siede, *Research Associate*

Eamonn Smith, *Administrator*

Annie Taylor, *Administrative Assistant*

Rita J. Walker, *Controller*

(212) 744-3586

gallery@questroyalfineart.com

www.questroyalfineart.com

DECEMBER 2023

Art is the gift of a lifetime.

A gift that provides daily pleasure—without expiration—never to become obsolete—ever present—always a reminder of the giver—a progenitor of memory and sentiment—truly the gift of a lifetime.

And there isn't any reason why art can't be a gift to yourself!

To be assured that the recipient will be completely satisfied, ask us about an exchange policy implemented for this gift-giving season. Timely delivery and stunning gift wrapping included.

LOUIS M. SALERNO, Owner





William Trost Richards (1833–1905)

Moonlit Seascape, 1875

Watercolor on paper

7½ x 13⅛ inches (sight size)

Signed and dated lower left of center:

WMT. Richards 1875

\$27,500

LEFT:

William Edward Norton (1843–1916)

Marine Scene with Lighthouse, 1872

Oil on canvas

18⅛ x 30¼ inches

Signed and dated lower right:

WE NORTON. \ 72

\$24,000

RIGHT:

Aaron Harry Gorson (1872–1933)

The Break of the Haze

Oil on canvas laid down on board

16 x 11⅞ inches

Signed lower right: AH Gorson

\$16,500





Henry F. Farny (1847–1916)

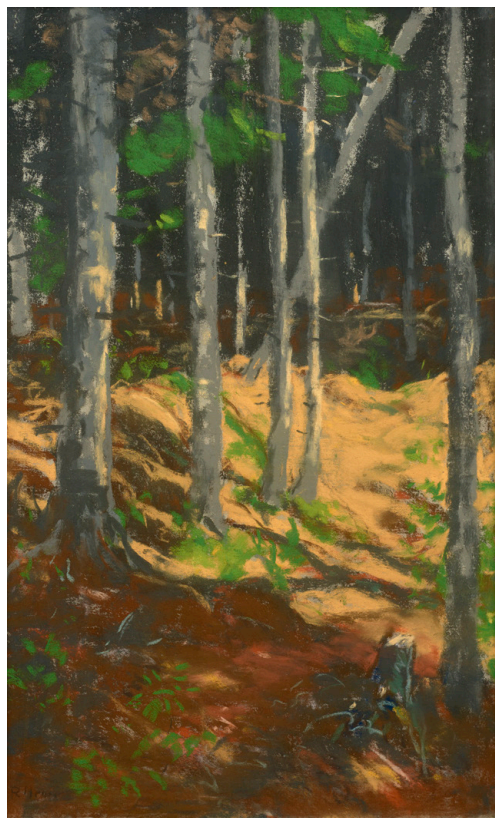
Deer in the Forest, 1888

Watercolor and gouache on board

18³/₈ x 12³/₁₆ inches

Signed and dated lower right: • FARNY • / 88

\$42,500



Robert Henri (1865–1929)

The Woods, Monhegan Island

Pastel on canvas laid down on board

19³/₄ x 12¹/₂ inches

Signed lower left: R Henri; signed lower right:

R HENRI; on verso: Robert Henri /

The Woods, Monhigan [sic] Island / 288 / K / 2

\$42,000

James Renwick Brevoort (1832–1918)

Summer Landscape

Oil on canvas

14 x 24 inches

Signed lower right: JR Brevoort

\$22,500

Chauncey Foster Ryder (1868-1949)

On the Mountain Side

Oil on canvas

24³/₁₆ x 20³/₁₆ inches

Signed lower right: *Chauncey F Ryder*

\$18,500





Carl Wuermer (1900–1983)

Birches in Winter

Oil on canvas

25¹/₈ x 30 inches

Signed lower right: *Carl Wuermer*; on verso: No. 139 /
"BIRCHES IN WINTER" / by / CARL WUERMER

\$22,500

Charles Hoffbauer (1875–1957)

The Lagoon, Venice

Oil on canvas laid down on board

8⁵/₈ x 12¹/₄ inches (sight size)

\$21,000





Roger Medearis (1920-2001)

Missouri Farm, 1970

Tempera on board

16 x 24 inches

Signed lower left: *MEDEARIS*; on verso: *MISSOURI FARM / 16" x 24" / PAINTED IN EGG TEMPERA / (WITH ACRYLIC POLYMER EMULSION) / PAINTED ON HARDBOARD PANEL WHICH HAS / BEEN COATED WITH ACRYLIC GESSO. / VARNISHED WITH "LIQUITEX SOLUVAR."* / 1970 Roger Medearis / MONTEREY PARK, CALIFORNIA

\$45,000

Frank Myers Boggs (1855-1926)

Seine with View of Eiffel Tower (Vue de Paris)

Oil on canvas

15 x 21³/₄ inches

Signed indistinctly lower left under liner

\$37,500





Alec Montroy (1918–2006)

Times Square–47th, 1985

Oil on canvas

30 x 40 inches

On verso: *Times Square–47th St (ca 1920) / AM '85*

\$27,500

Irving Ramsay Wiles (1861–1948)

Paddle Wheeler and Schooner on the River, 1916

Oil on panel

9³/₄ x 14 inches

Signed lower right: *Irving R. Wiles*; on verso:

To Arthur H. Clark Esq. / From Irving R. Wiles April 1920 / New London CONN / Aug - 1916

\$35,000

Alec Montroy (1918–2006)

Statue of Liberty, 1994

Oil on canvas

36 x 24 inches

Initialed and dated lower left: *A.M. 94*

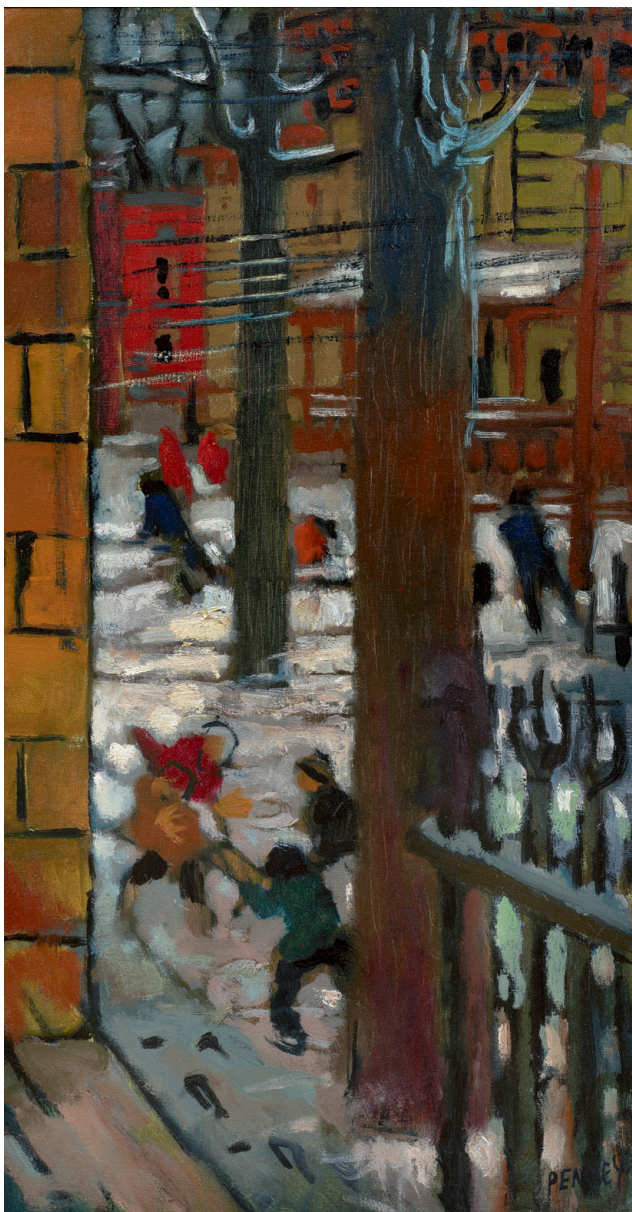
\$22,500





Hayley Lever (1876–1958)
Train Station in Snow
Oil on board
17⁷/₈ x 24¹/₄ inches
Signed lower left: *Hayley Lever*
\$21,500

Ralph Albert Blakelock (1847–1919)
Landscape Silhouette at Twilight
Oil on panel
7¹/₄ x 10³/₄ inches
Signed illegibly lower right
\$48,500



James Penney (1910–1982)
Street in Winter, 1949
Oil on canvas
30 x 16¹/₄ inches
Signed lower right: *PENNEY*; on stretcher bar:
Street in Winter JAMES / PENNEY 1949
\$15,000



Eric Sloane (1905–1985)

Spring in Cambridge, Vermont

Oil on board

28 x 33 inches

Signed lower right: *SLOANE*; inscribed lower left:

SPRING IN / CAMBRIDGE VERMONT; on verso:

— *ERIC SLOANE / BROOKFIELD / CONN*

\$29,500

Henry Martin Gasser (1909–1981)

Sand, Sea, and Rocks

Watercolor and gouache on paper

19³/₈ x 26 inches (sight size)

Signed lower left: *H. GASSER*

\$27,500



Henry Martin Gasser (1909–1981)

Gloucester Vista

Watercolor and gouache on paper

15³/₈ x 22¹⁵/₁₆ inches

Signed lower right: *H. GASSER*; on verso:

"Gloucester Vista" / HENRY GASSER / N.A.

\$25,000





Ben Bauer (b. 1980)

Moon Show in Withrow

Oil on aluminum

24 x 30 inches

Signed lower left: *BEN BAUER*; on verso:

MOON SHOW IN WITHROW / 24" X 30"

OIL ON ALUMINUM / BEN BAUER

\$21,500

Harry Leith-Ross (1886–1973)

Snow on the West Bank

Oil on board

8¹/₄ x 10¹/₄ inches

Signed lower right: *Leith-Ross*

\$17,500



Walter Launt Palmer (1854–1932)
Moonrise Over a Snowy Landscape
Watercolor, gouache, and crayon on paper
laid down on board
19¹⁵/₁₆ x 23⁷/₈ inches
Signed lower right: –W.L. PALMER–

\$29,500





James Fairman (1826-1904)

Presidential Range, New Hampshire, 1870

Oil on canvas

30 x 46¹/₈ inches

Initialed and dated lower left: *J.F. 1870*

\$37,500

QUESTROYAL FINE ART, LLC

Important American Paintings

903 Park Avenue (at 79th Street), Third Floor, New York, NY 10075 T:(212) 744-3586 F:(212) 585-3828

HOURS: Monday-Friday 10-6, Saturday 10-5 and by appointment

EMAIL: gallery@questroyalfineart.com www.questroyalfineart.com