

A dramatic seascape painting by J.M.W. Turner, 'Rain, Steam, and Great Smoky Mountains' style, showing a turbulent sea with a small boat and a large sun in a hazy sky. The scene is filled with dynamic energy, with waves crashing against dark, jagged rocks. The sky is a mix of soft, hazy colors, with a large, glowing sun or moon in the center. The overall mood is one of awe and the power of nature.

ART IS LIFE'S MOST ENDURING POSSESSION

16 Selections



QUESTROYAL FINE ART, LLC

Louis M. Salerno, *Owner*
Brent L. Salerno, *Co-Owner*
Chloe Heins, *Director*
Kayla Seifert, *Gallery Manager*
Jesse McCloskey, *Art Handler*
Katie Siede, *Research Associate*
Eamonn Smith, *Administrator*
David Willner, *Administrative Assistant*
Rita J. Walker, *Controller*

(212) 744-3586
gallery@questroyalfineart.com
www.questroyalfineart.com

MAY 2023

Mauritz Frederik Hendrik de Haas (1832–1895)
Sunset on the Coast
Oil on canvas
40¹/₈ x 67¹/₈ inches
Signed lower right: *MFH de Haas*
\$225,000

ART IS LIFE'S MOST ENDURING POSSESSION

Empires have fallen, financial institutions have collapsed, world wars have been waged, plagues have come and gone—art survives.

All the great innovations of the past are obsolete—except art.

Chosen wisely, art is an asset with integrity and longevity.

Trust your instincts, strive to acquire what you love.

Art is life's most enduring possession.

LOUIS M. SALERNO, Owner

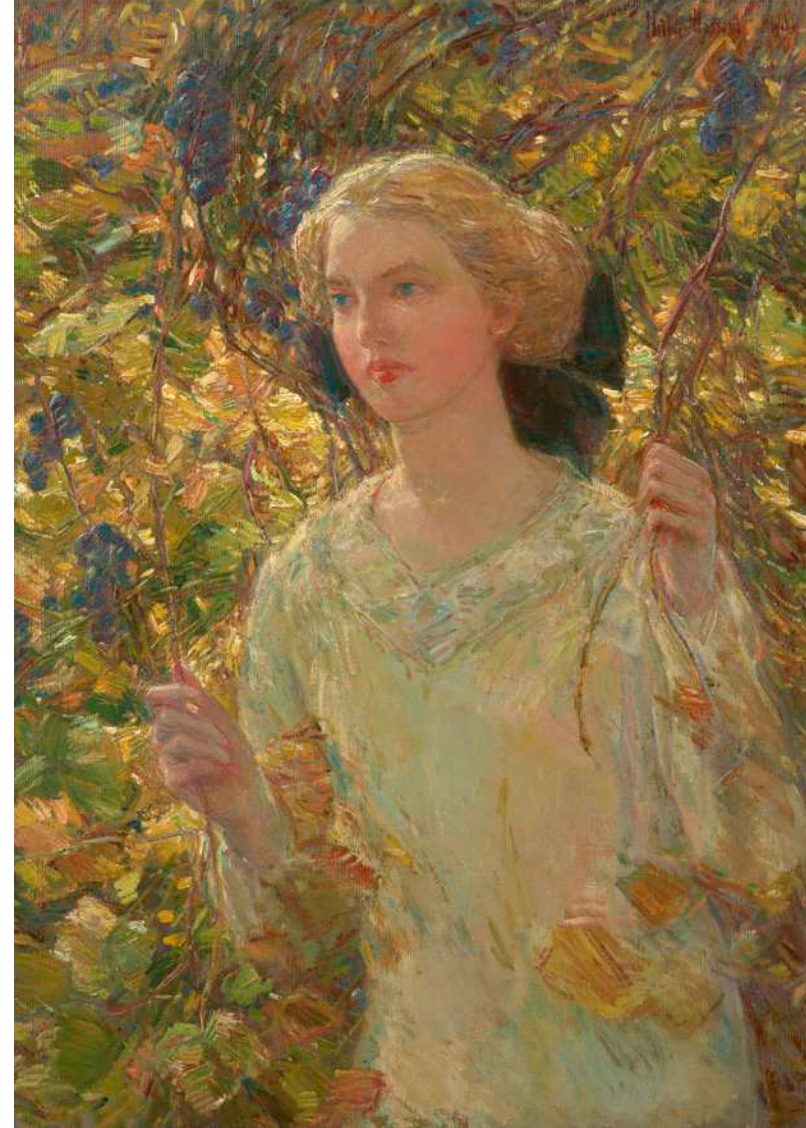
Raymond Dabb Yelland (1848–1900)
Moonlit Sea
Oil on board
10¹/₄ x 6⁷/₈ inches
Signed lower right: *R.D. Yelland*
\$10,500





George Henry Smillie (1840–1921)
New England Coast Scene
Oil on canvas
20³/₈ x 30³/₈ inches
Signed and inscribed lower left: *Geo. H. Smillie - N.Y.*
\$24,000

Childe Hassam (1859–1935)
The Grapevine, 1911
Oil on canvas
35¹/₄ x 25³/₈ inches
Signed and dated: *Child Hassam 1911*
\$195,000





Ben Bauer (b. 1980)
Moon Show in Withrow
Oil on aluminum
24 x 30 inches
Signed lower left: *BEN BAUER*;
on verso: *MOON SHOW IN
WITHROW / 24" X 30" OIL ON
ALUMINUM / BEN BAUER*
\$21,500



Daniel Garber (1880–1958)
Elm Bough, 1940
Oil on canvas
28 x 30 inches
Signed lower right: *Daniel Garber*
\$385,000



Eric Sloane (1905–1985)
Cornwall Bridge, Connecticut
Oil on board
23⁷/₈ x 48 inches
Signed lower left of center:
ERIC SLOANE—;
on verso: *Eric SLOANE /*
CORNWALL BRIDGE / CONN.
\$38,500

Eric Sloane (1905–1985)
Connecticut Village
Oil on board
24 x 20⁵/₈ inches
Signed and inscribed lower left:
Eric SLOANE NA; on verso:
CONNECTICUT VILLAGE
\$24,500





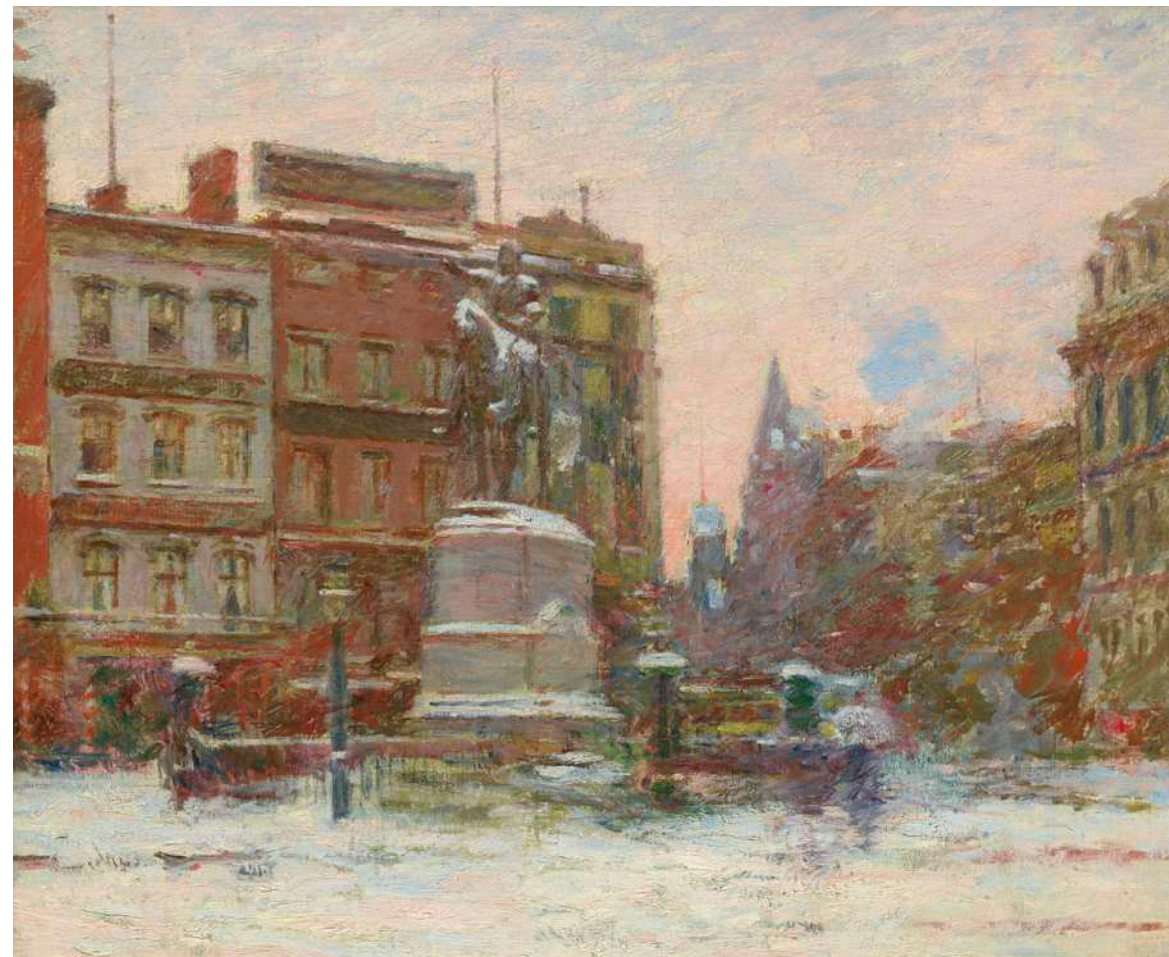
Theodore Robinson (1852–1896)

*Union Square, Winter
(Washington Monument)*

Oil on canvas

18³/₈ x 22³/₈ inches

\$185,000



Edward Moran (1829–1901)

*Squally Weather off North Haven,
Bay of Fundy*, 1859

Oil on canvas

24 x 36 inches

Signed and dated lower left: *E. Moran 1859*;
on verso: *Squally Weather / off North Haven,
Bay of Fundy / E. Moran / 1859*

\$49,500



Paul Cornoyer (1864–1923)
Madison Square Garden at Night, 1912
Oil on canvas
22 x 27¹/₄ inches
Signed and dated lower left: *PAUL CORNOYER / 1912*
\$47,500



Jessie Arms Botke (1883–1971)
Sunflowers
Watercolor on paper
21¹/₈ x 19¹/₄ inches (sight size)
Signed lower right: *JESSIE ARMS BOTKE*
\$19,500



Tom Yost (b. 1957)
Kaaterskill Clove, 2022
Oil on linen
20³/₄ x 16⁷/₈ inches
Signed and dated lower right of center: *Yost '22*
\$12,500



RIGHT:

Ogdon Minton Pleissner
(1905–1983)

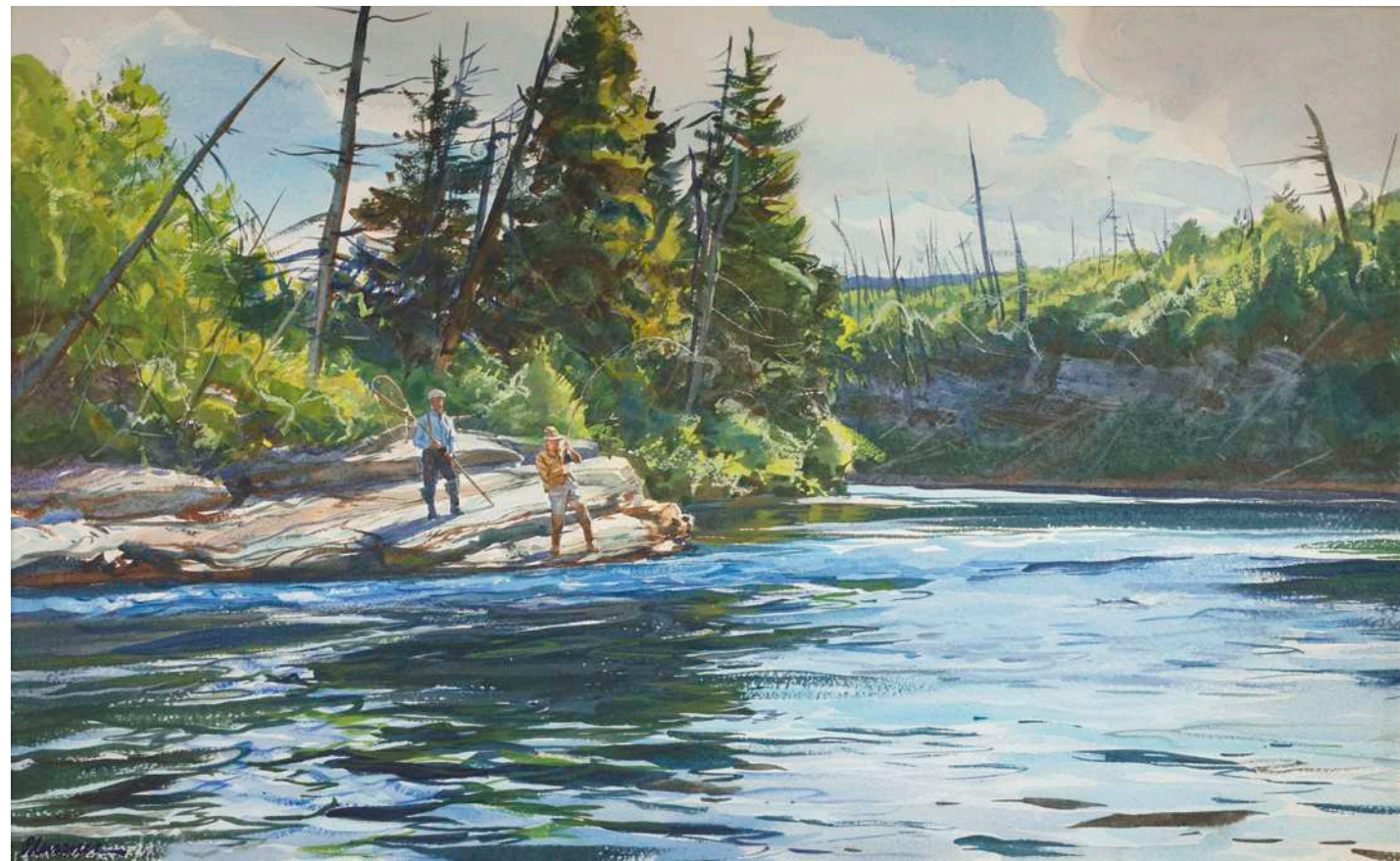
Big Salmon Pool

Watercolor on paper

15⁷/₈ x 25³/₄ inches (sight size)

Signed lower left: *Pleissner*

\$39,000



LEFT:

George William Sotter
(1879–1953)

The Artist's Studio, 1946

Oil on board

22 x 26 inches

Signed and dated lower right:

G. W. Sotter-46

\$195,000



Abraham Jacobi Bogdanove
(1886-1946)
Coastal Scene
Oil on board
8 x 10 inches
Signed lower left: *A.J. Bogdanove*
\$5,000

QUESTROYAL FINE ART, LLC

Important American Paintings

903 Park Avenue (at 79th Street), Third Floor, New York, NY 10075 T:(212) 744-3586 F:(212) 585-3828

HOURS: Monday-Friday 10-6, Saturday 10-5 and by appointment

EMAIL: gallery@questroyalfineart.com www.questroyalfineart.com