

AMERICAN MODERN



AMERICAN MODERN

QUESTROYAL FINE ART, LLC

Louis M. Salerno, *Owner*

Brent L. Salerno, *Co-Owner*

Chloe Heins, *Director*

Kayla Seifert, *Gallery Manager*

Jesse McCloskey, *Art Handler*

Katie Siede, *Research Associate*

Eamonn Smith, *Administrator*

David Willner, *Administrative Assistant*

Rita J. Walker, *Controller*

(212) 744-3586

gallery@questroyalfineart.com

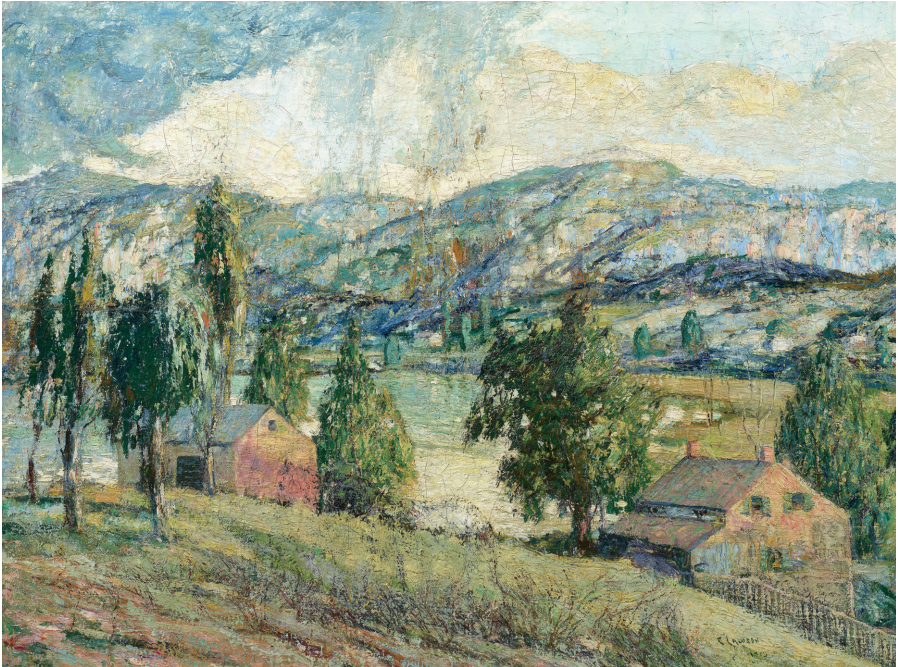
www.questroyalfineart.com

FEBRUARY 2023

Near the turn of the century in America, certain visionary artists defied convention. They allowed their imagination to drive their artistic impulses, and with a brush liberated from the restraint of convention and formulas, a new movement was born. In 1913, this art, once met with shock and condemnation, took center stage at the pivotal Armory Show. As the twentieth century progressed, it was overwhelmingly accepted and integrated into an age-old continuum of expression. It invited the viewer—accustomed to an understanding based on shared experience and familiarity—to contemplate this uniquely imagined and unfamiliar imagery.

We invite you to experience 28 works by artists who chose to take a different path.

LOUIS M. SALERNO, Owner



Charles Burchfield (1893–1967)

*Lincoln Avenue at Main Street,
Salem, Ohio*, 1916

Watercolor and pencil on paper
20⁵/₈ x 25 inches (sight size)

Estate stamp lower right; on verso:
*Lincoln Avenue at Main St., / Salem,
Ohio / January, 1916*

\$165,000



Everett Shinn (1876–1953)

The Docks, 1899

Pastel on joined paper
22³/₄ x 22¹/₄ inches (sight size)

Signed and dated lower right:
EVERETT SHINN / 99

\$195,000



LEFT:

Ernest Lawson (1873–1939)

Westchester Hillside

Oil on canvas
30¹/₈ x 40¹/₈ inches

Signed and dated lower right:
E LAWSON / 191[9]

\$85,000



Alfred H. Maurer (1868–1932)

Still Life with Fish

Oil and gold leaf on board

11¹/₁₆ x 13⁵/₈ inches

Signed lower right: *A.H. Maurer*

\$30,000

George Luks (1867–1933)

Road to the Water

Watercolor and gouache on paper

15¹/₈ x 18⁷/₈ inches

Signed lower right: *George Luks*

\$55,000



Marsden Hartley (1877–1943)

Flowers

Oil on canvas

24 x 19⁵/₈ inches

On verso: *Marsden Hartley*

\$435,000



Marsden Hartley (1877–1943)

Autumn Dogtown Commons, 1934

Oil and pencil on board

18 x 24 inches

On verso: *Autumn Dogtown Commons / Cape Ann Mass / 1934 / Marsden Hartley*

\$325,000





Gifford Beal (1879–1956)

Gulls in Moonlight, 1925

Oil on canvas

28 x 36¹/₈ inches

Signed and dated lower right:

GIFFORD BEAL 25

\$27,500

William Sommer (1867–1949)

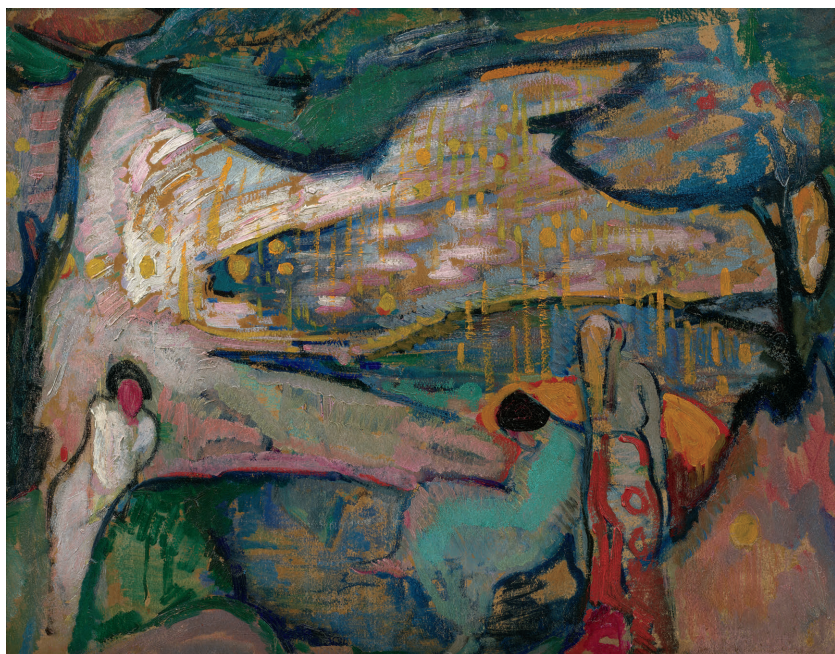
Nocturne

Oil on board

21³/₄ x 27³/₄ inches (sight size)

Signed indistinctly lower right

\$47,500





Oscar Bluemner (1867-1938)

Venus, 1924

Watercolor and pencil on paper

5 x 6³/₄ inches

Monogrammed lower left: *OFB*;
inscribed, dated, and monogrammed
left margin: *Eliz Nov 13-24 65W OFB*

\$57,500

John Sloan (1871-1951)

White Cloud and Rock

Oil on canvas

19³/₄ x 23⁵/₈ inches

\$24,000





Maurice Prendergast (1858–1924)

Bathing Beach, ca. 1919

Watercolor and pastel on paper

13⁷/₈ x 19⁷/₈ inches

Signed lower left: *Prendergast*

\$155,000

Roger Medearis (1920–2001)

Missouri Farm, 1970

Tempera on board

16 x 24 inches

Signed lower left: *MEDEARIS*; on verso: *MISSOURI FARM / 16" x 24" / PAINTED IN EGG TEMPERA / (WITH ACRYLIC POLYMER EMULSION) / PAINTED ON HARDBOARD PANEL WHICH HAS / BEEN COATED WITH ACRYLIC GESSO. / VARNISHED WITH "LIQUITEX SOLUVAR." / 1970 Roger Medearis / MONTEREY PARK, CALIFORNIA*

\$45,000





Jane Freilicher (1924–2014)

Northeast View, 1975

Oil on canvas

47 x 50¹/₈ inches

Signed lower right: *Jane Freilicher*;
on stretcher bar: "*Northeast View*"
1975 Jane Freilicher 47" x 50" /
oil/canvas

\$135,000

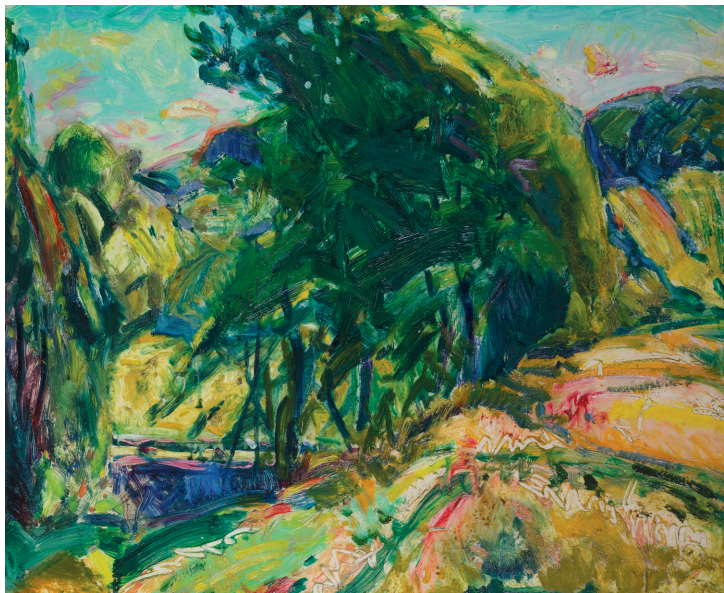
Alfred H. Maurer (1868–1932)

Landscape with Green Tree

Oil on board

18¹/₂ x 22¹/₄ inches

\$65,000





William Glackens (1870–1938)

Flowers in a White Pitcher

Oil on board

16 x 13 inches (sight size)

Initialed lower right: W.G.;
estate stamp on verso

\$39,500



Joseph Stella (1877–1946)

Flowers, Vertical

Crayon and pencil on paper

13¹/₄ x 10¹/₄ inches (sight size)

Signed lower center: *Joseph Stella*

\$8,500



Dale Nichols (1904–1995)

Winter on the Farm, 1961

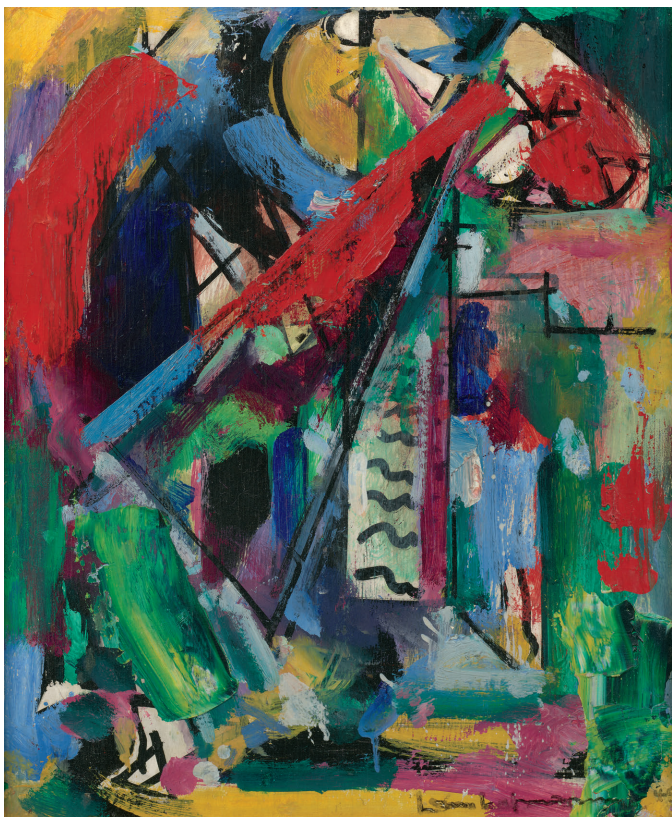
Oil on canvas

23³/₄ x 31¹/₄ inches

Signed and dated lower left:

DALE NICHOLS · 1961

\$105,000



Hans Hofmann (1880–1966)

Untitled, 1949

Oil on panel

18 x 15¹/₈ inches

Signed and dated lower right: 49;

on verso: to Mrs. / Justina Hart /

New York / April 24. 50 /

Hans Hofmann

\$195,000



Charles Burchfield (1893–1967)

Rocks and Stumps, 1918

Watercolor and charcoal on paper

24 x 17½ inches (sight size)

Signed and dated lower right:

Chas Burchfield / 1918-;

on verso: *April 14, 1918 / "The Cave" /*

Not for sale

\$155,000



Charles Burchfield (1893–1967)

Fires of Spring in Big Woods, 1951

Watercolor and pencil on joined paper

39½ x 29¼ inches (sight size)

Estate stamp lower right

\$435,000



Guy Pène du Bois (1884–1958)

Suspense

Oil on canvas

25 x 30¹/₁₆ inches

Signed lower left: *Guy Pène du Bois*;

on stretcher bar: *SUSPENSE*

\$110,000

Fairfield Porter (1907–1975)

*Broadway South of Union Square,
New York*

Oil on paper

16¹/₂ x 13¹/₄ inches (sight size)

\$45,000





Henry Martin Gasser (1909–1981)

New Jersey Landscape

Watercolor and pencil on paper

19¹/₈ x 24¹/₄ inches (sight size)

Signed lower right: *H. GASSER*

\$17,500



Reginald Marsh (1898–1954)

Merry-Go-Round, 1950

Oil on board

6 x 13⁵/₁₆ inches

Signed lower left: *Reginald Marsh 1950*

\$27,500

RIGHT:

Luigi Lucioni (1900–1988)

The Weathered Barn, 1947

Oil on canvas

19¹/₈ x 31¹/₁₆ inches

Signed and dated lower left:

L. Lucioni 1947

\$95,000



Henry Martin Gasser (1909–1981)

Manhattan Skyline

Watercolor and pencil on paper

19 x 24 inches (sight size)

Signed lower right: *H. GASSER*

\$17,500





Andrew Wyeth (1917–2009)

Dead End, Study for End of the Road, 2005

Watercolor on paper

17 x 18½ inches (sight size)

Signed lower right: *Andrew Wyeth*

\$425,000

© 2023 Andrew Wyeth / Artists Rights Society (ARS), New York

QUESTROYAL FINE ART, LLC

Important American Paintings

903 Park Avenue (at 79th Street), Third Floor, New York, NY 10075 T:(212) 744-3586 F:(212) 585-3828

HOURS: Monday–Friday 10–6, Saturday 10–5 and by appointment

EMAIL: galler@questroyalfineart.com www.questroyalfineart.com