



EXTRACTIONS

Louis M. Salerno, *Owner*

Brent L. Salerno, *Co-Owner*

Chloe Heins, *Director*

Nina Sangimino, *Senior Researcher*

Chelsea DeLay, *Coordinator*

Shannon Cassell, *Senior Administrator*

Alison Kowalski, *Research Associate*

Mishele Begun, *Administrator*

Rita J. Walker, *Controller*

QUESTROYAL FINE ART, LLC

Important American Paintings

903 Park Avenue (at 79th Street), Third Floor, New York, NY 10075 T: (212) 744-3586 F: (212) 585-3828

HOURS: Monday–Friday 10–6, Saturday 10–5 and by appointment

EMAIL: gallery@questroyalfineart.com www.questroyalfineart.com

It has long been said that beauty is in the details, which is the inspiration for this catalogue of extractions. It is as if we have halted the orchestra so that you may experience the grace of a single instrument. In much the same way, each detail that composes a painting offers many and varied visual pleasures.

We have extracted twenty-one poetic passages from twenty-one different paintings, any of which may lead you to the painting you have been searching for.

LOUIS M. SALERNO, Owner

COVER

Thomas Blinks (1860–1912)

English Pointers in a Landscape
(detail)

Oil on canvas

14¹/₈ x 18 inches

Monogrammed lower left: *TBlinks*



LEFT

Preston Dickinson (1889–1930)

A Pair of Studies for Screens, Summer
(detail)

Mixed media on board laid down on paper
11¹/₁₆ x 15¹⁵/₁₆ inches

RIGHT

Charles Hoffbauer (1875–1957)

New York Street Scene (detail)

Oil on panel

10⁷/₁₆ x 13³/₁₆ inches

Inscribed lower right: *To Muriel /
That she may miss / them / Eddie*





LEFT

Max Kuehne (1880–1968)

Across the Hudson (detail)

Oil on canvas laid down on board

24 x 30 inches

Signed lower left: *Kuehne*; on verso:

Across the Hudson / Max Kuehne

RIGHT

Maurice Braun (1877–1941)

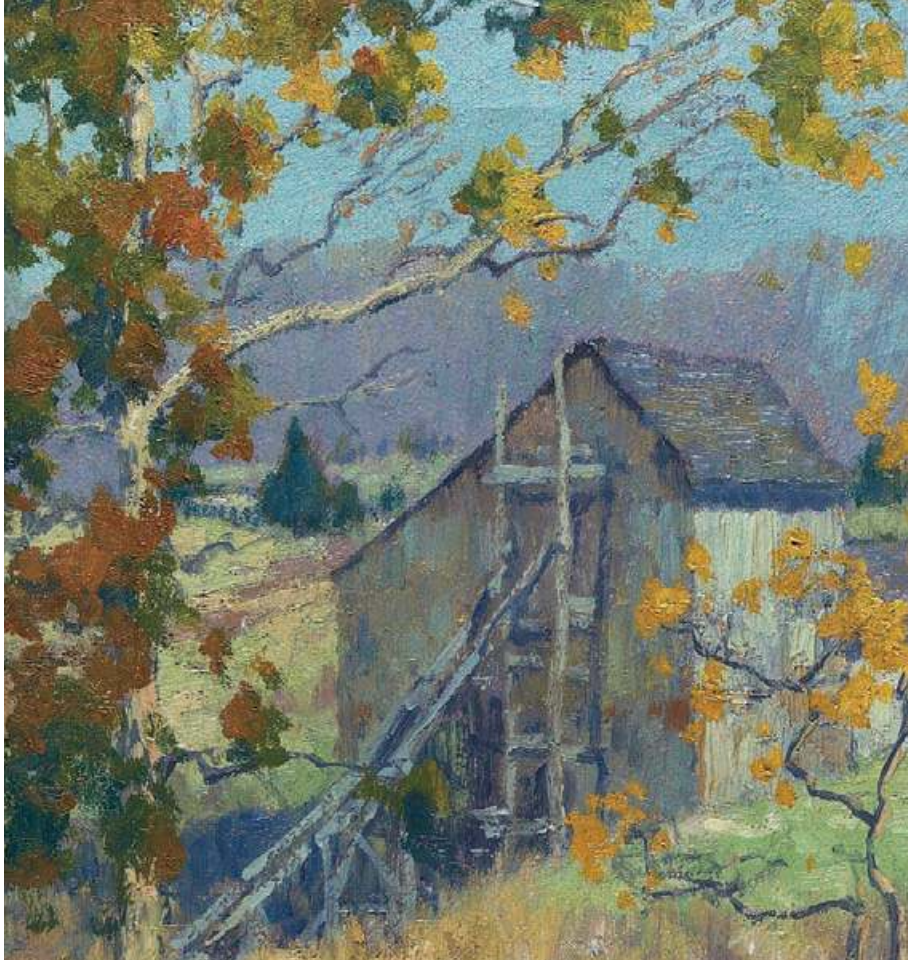
Pond at Old Lyme, Connecticut (detail)

Oil on canvas

16 x 19¹⁵/₁₆ inches

Signed lower right: *Maurice Braun—*;

on stretcher bar: *Pond at Old Lyme, Conn*





LEFT

Fairfield Porter (1907–1975)

Flowers, 1955 (detail)

Oil on canvas

22 ¹/₁₆ x 27 ¹/₈ inches

Signed and dated lower right:

Fairfield Porter 55

RIGHT

Henry Martin Gasser (1909–1981)

End of the Line (detail)

Watercolor on paper

22 x 30 ¹/₄ inches (sight size)

Signed lower left: *H. GASSER*; on verso:

"END OF THE LINE" / H. GASSER



More than
A STORY AS DEEP AS
WOMANS HEART



LEFT

Reginald Marsh (1898–1954)

Off to the Movies, Love Affair is Playing!,
1939 (detail)

Watercolor and gouache on paper

27⁷/₁₆ x 19⁵/₈ inches (sight size)

Signed and dated center right:

REGINALD MARSH '39

RIGHT

Jack Lorimer Gray (1927–1981)

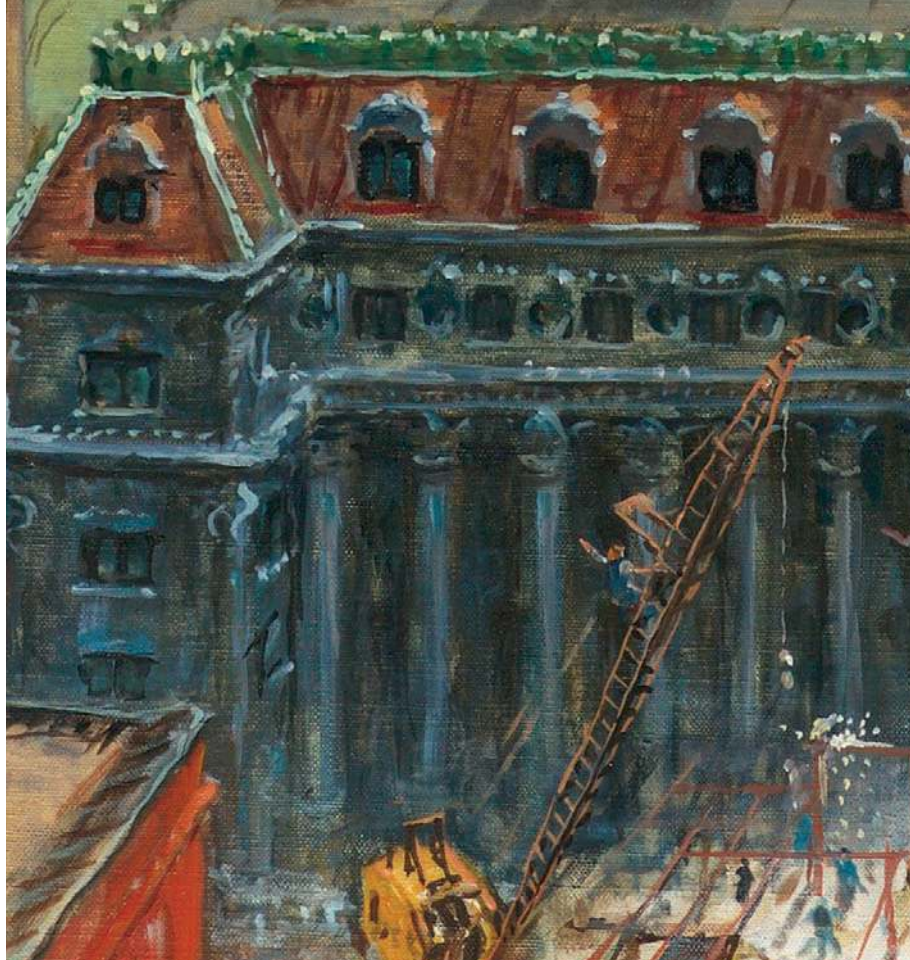
*The Battery: Demolition of the Old
Produce Exchange Building*, 1957 (detail)

Oil on canvas

26 x 36¹/₄ inches

On stretcher bar: May 1957 / J G 114

Battery + Old produce Exchg Bldg





LEFT

Hayley Lever (1876–1958)

Still Life with Pumpkin and Turnips (detail)

Oil on canvas

24 x 36¹/₈ inches

Signed lower right: *Hayley Lever*;
on stretcher bar: *Hayley Lever*

RIGHT

Hayley Lever (1876–1958)

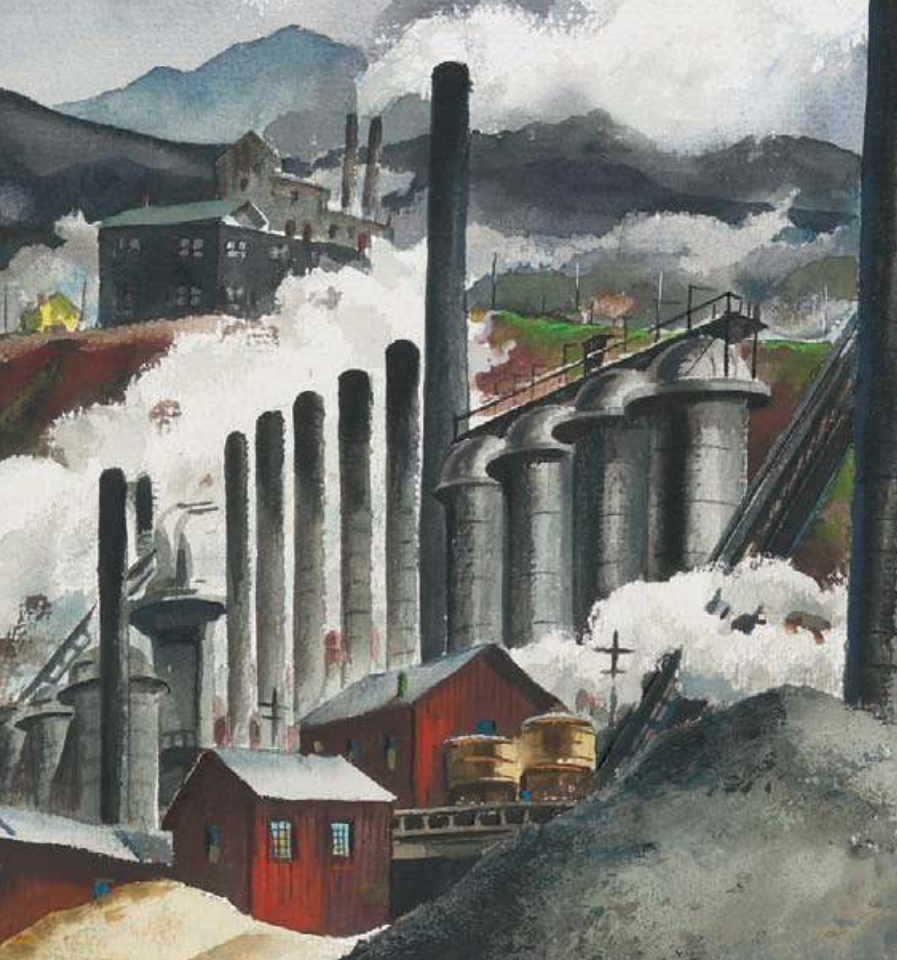
Downtown Street Scene (detail)

Oil on board

7⁷/₁₆ x 9⁷/₁₆ inches

Signed lower right: *Hayley Lever*





LEFT

Henry Martin Gasser (1909–1981)

Industrial Vista (detail)

Watercolor and gouache on paper laid
down on board

21 x 27⁷/₈ inches

Signed lower right: *H. GASSER /*; on verso:
INDUSTRIAL VISTA / HENRY GASSER

RIGHT

George William Sotter (1879–1953)

Evening (detail)

Oil on canvas

22¹/₁₆ x 26¹/₈ inches

Signed lower right: *G. W. Sotter*





LEFT

Irving Ramsay Wiles (1861–1948)

Magnolias (detail)

Oil on canvas

21⁷/₈ x 18¹/₁₆ inches

Signed lower left: *Irving R Wiles*

RIGHT

John Whorf (1903–1959)

Night Fishing (detail)

Watercolor on paper

20¹/₂ x 28¹/₄ inches (sight size)

Signed lower right: *John Whorf*





LEFT

Aaron Draper Shattuck (1832–1928)

*The Cascades, Pinkham Notch,
Mt. Washington* (detail)

Oil on canvas laid down on board

15⁵/₈ x 19³/₁₆ inches

On verso: *TRICKLING WATER / PINKHAM
NOTCH*

RIGHT

George Bellows (1882–1925)

Deserted Farm, No. II, 1920 (detail)

Oil on canvas

20³/₁₆ x 24¹/₄ inches

On stretcher bar: *DESERTED FARM No II*





LEFT

Frederick J. Mulhaupt (1871–1938)

An October Evening (detail)

Oil on canvas

30 ¹/₄ x 25 ¹/₈ inches

Signed lower left: *MULHAUPT*—

RIGHT

Francis Augustus Silva (1835–1886)

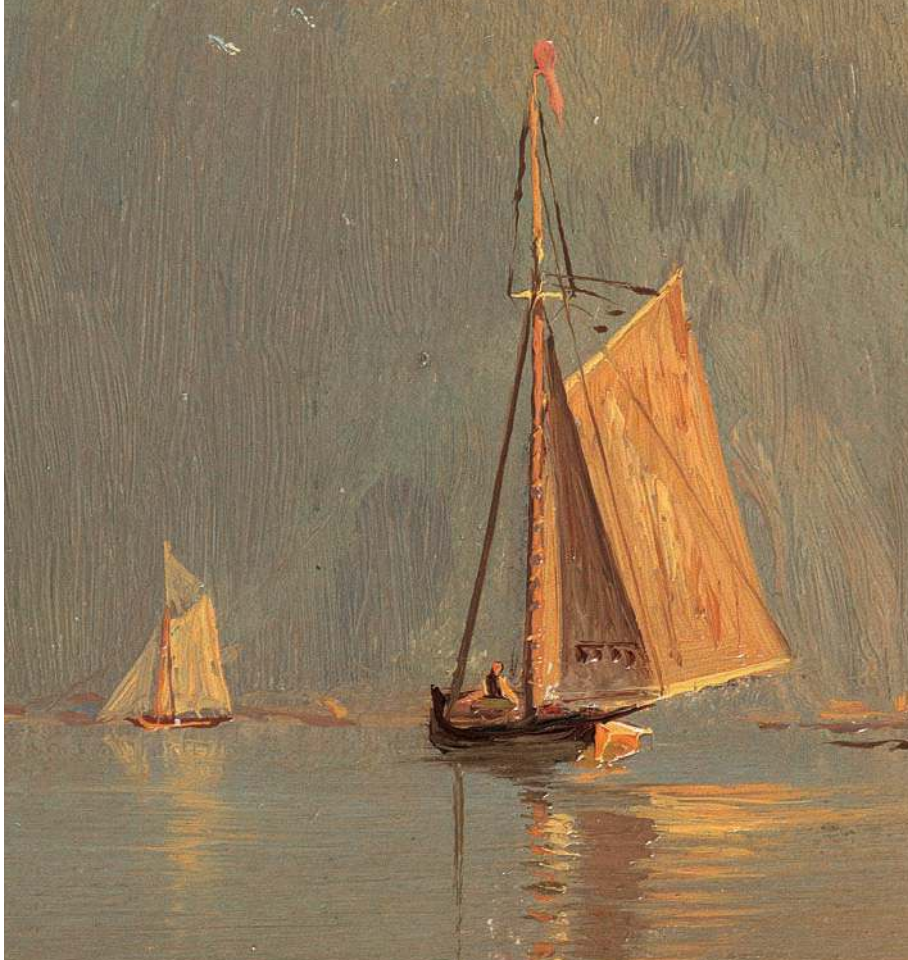
Hudson River above Peekskill (detail)

Oil on board

4 ⁷/₈ x 8 ¹/₂ inches

Signed lower left: *SILVA*.; on verso:

Hudson River / above Peekskill





LEFT

John Sloan (1871–1951)

Sun Look Across Harbor, Gloucester
(detail)

Oil on canvas

24 x 19¹⁵/₁₆ inches

Signed lower right: *John Sloan*; on canvas
edge: *SUN LOOK ACROSS HARBOR*

RIGHT

Alfred Thompson Bricher (1837–1908)

Rocky Cliffs with Breaking Waves (detail)

Oil on canvas

40 x 30 inches

Monogrammed lower right: *ATBRICHER*





QUESTROYAL FINE ART, LLC

Important American Paintings

903 Park Avenue, Third Floor, New York, NY 10075

T: (212) 744-3586 F: (212) 585-3828

EMAIL: galler@questroyalfineart.com www.questroyalfineart.com