



Joseph Stella (1877–1946)

Butterflies

Watercolor and gouache on paper

19¹/₂ x 13³/₁₆ inches (sight size)

Signed lower right: *Joseph Stella*;
on verso: *watercolor / by / Jos. Stella*

QUESTROYAL FINE ART, LLC

Important American Paintings

903 Park Avenue, Third Floor, New York, NY 10075

T: (212) 744-3586 F: (212) 585-3828

EMAIL: gallery@questroyalfineart.com

www.questroyalfineart.com

THE HOT LIST

Louis M. Salerno, *Owner*

Brent L. Salerno, *Co-Owner*

Chloe Heins, *Director*

Nina Sangimino, *Senior Researcher*

Chelsea DeLay, *Coordinator*

Shannon Cassell, *Senior Administrator*

Ally Chapel, *Administrator*

Jenny Lyubomudrova, *Research Associate*

Rita J. Walker, *Controller*

QUESTROYAL FINE ART, LLC

Important American Paintings

903 Park Avenue (at 79th Street), Third Floor, New York, NY 10075 T: (212) 744-3586 F: (212) 585-3828

HOURS: Monday–Friday 10–6, Saturday 10–5 and by appointment

EMAIL: gallery@questroyalfineart.com www.questroyalfineart.com

THE HOT LIST Our most talked about paintings

Have you ever wondered which paintings truly capture the attention of collectors? Which ones draw the most frequent and consistent responses, even from those who are not interested in the period or subject matter?

This is our HOT LIST. In the company of one hundred competing works on view here at Questroyal, these twenty-one provoke the most enthusiastic reactions.

Put one of these stars on your wall and see what happens!

LOUIS M. SALERNO, Owner



Henry Martin Gasser (1909–1981)

Industrial Vista

Watercolor and gouache on paper laid down on board

21 x 27⁷/₈ inches

Signed lower right: *H. GASSER*;
on verso: *INDUSTRIAL VISTA / HENRY GASSER*



Andrew Fisher Bunner (1841–1897)

The Evening Hour, Summer, 1875

Oil on canvas

6¹/₂ x 12³/₄ inches

Signed, inscribed, and dated lower right: *A. F. BUNNER / MÜNCHEN 187*[illegible]; on verso: *The evening hour. / Summer / A. F. BUNNER / MUNICH · 1875*



Henry Stull (1851–1913)

*The Great Eastern Handicap (Brooklyn Handicap) 1895,
Gravesend Course, 1896*

Oil on canvas

18¹/₄ x 28³/₄ inches

Signed and dated lower right: *Henry Stull. / 1896*



William Stanley Haseltine (1835–1900)

Row of Fishing Boats, Venice

Oil on canvas

13⁷/₈ x 24¹⁵/₁₆ inches



Thomas Hart Benton (1889–1975)

Still Life, Flower

Oil on paper laid down on board

9¹¹/₁₆ x 5¹³/₁₆ inches

Abbott Graves (1859–1936)

In the Garden

Oil on canvas

16 x 20³/₁₆ inches

Signed lower left: *Abbott Graves*





Jane Peterson (1876–1965)

Six Squash Flowers

Oil on canvas

30¹/₁₆ x 24¹/₈ inches

Signed lower right: *JANE PETERSON*; on stretcher bar: *6 Squash flowers by Jane Peterson*

Victor Coleman Anderson (1882–1937)

The Garden

Oil on canvas

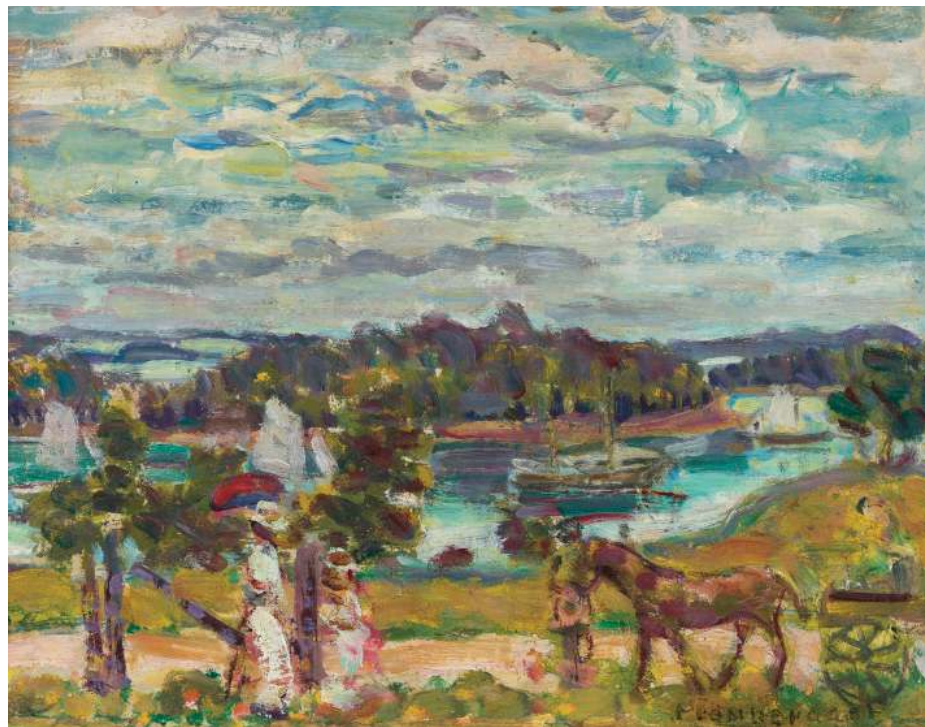
19⁷/₈ x 22¹/₂ inches





Richard Alan Schmid (b. 1934)
Portrait
 Mixed media on board
 15¹³/₁₆ x 9¹³/₁₆ inches (sight size)
 Signed lower right: *RICHARD SCHMID*—

Maurice Prendergast (1858–1924)
Brooksville, Maine
 Oil on paper laid down on board
 10³/₄ x 14 inches
 Signed lower right: *Prendergast*





Charles Burchfield (1893–1967)

Morning Glories, 1915

Mixed media on paper

14 x 10 inches

Signed and dated lower right: *Chas. Burchfield /*

Aug. 1915; on verso: *August 1915*

George Elmer Browne (1871–1946)

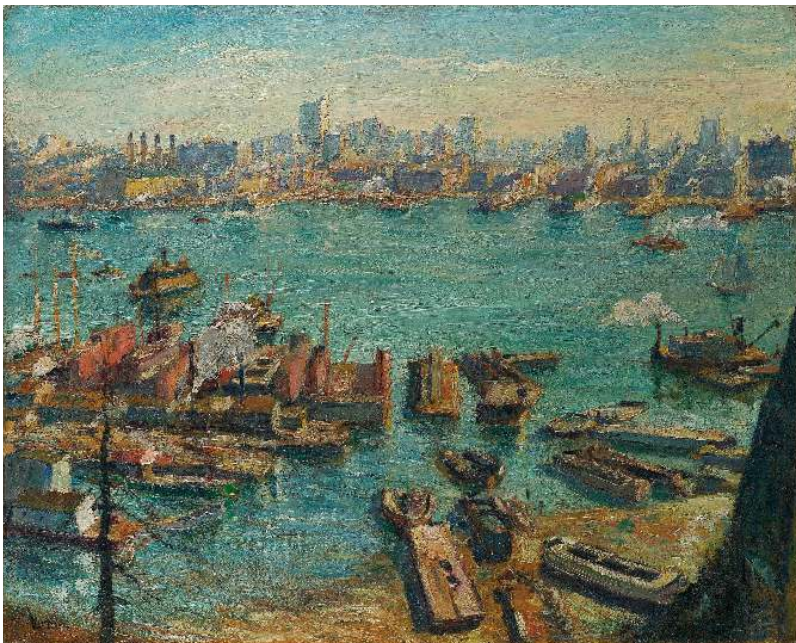
Boaters

Oil on canvas

14¹/₈ x 14¹/₈ inches

Signed lower right: *Geo.ElmerBrowne.*





Max Kuehne (1880–1968)
Across the Hudson
 Oil on canvas laid down on board
 24 x 30 inches
 Signed lower left: *Kuehne*; on verso: *Across the Hudson / Max Kuehne*



Paul Cornoyer (1864–1923)
Central Park in Winter
 Oil on canvas laid down on board
 13³/₄ x 16 inches
 Signed lower left: *PAUL CORNOYER.*;
 on verso: *Central Park in Winter*



Jasper Francis Cropsey (1823–1900)
Autumn Landscape, 1889
 Oil on canvas
 12³/₁₆ x 20¹/₄ inches
 Signed and dated lower right: *J. F. Cropsey / 1889*

Winslow Homer (1836–1910)
Fresh Air
 Ink on paper
 7¹⁵/₁₆ x 4¹⁵/₁₆ inches
 Inscribed lower right: *PHOTO ENG. CO. N.Y.*; on
 verso: “*Fresh Air*”—by Winslow Homer. / 14 x 20





Henry Martin Gasser (1909–1981)
Summer Yard
 Watercolor and pencil on paper
 14¹/₈ x 20¹⁵/₁₆ inches (sight size)
 Signed lower right: *H. GASSER*/; on verso: *SUMMER YARD* / *HENRY GASSER*



William Trost Richards (1833–1905)
Chester County
 Oil on board
 10 x 20 inches



Frank Weston Benson (1862–1951)

Grouse and Snow, 1931

Watercolor on paper

24⁵/₈ x 19⁵/₈ inches

Signed lower left: *F.W. Benson / '31*

Worthington Whittredge (1820–1910)

Hunter's Rest

Oil on canvas

14¹/₈ x 12¹/₁₆ inches

Signed lower right: *W. Whittredge*

